

Manual

Odette '95 MC

for

Windows 9x, NT, 200x, XP
(V3)

© 1998-2006 Bartsch Software

The information published within this document is subject to change without prior notice in order to improve reliability, design and functionality and does not represent a commitment on the part of the manufacturer.
In no event shall the manufacturer be liable for direct, indirect, special, incidental, or consequential damages arising out of the use or inability to use the product or documentation, even if advised of the possibility of such damages.
Product names mentioned below are used for identification purposes only and may be trademarks and/or registered trademarks of their respective companies.
This document contains proprietary information protected by copyright. All rights reserved. No part of this manual may be reproduced by any mechanical, or electronic or other means in any form without prior written permission of the manufacturer.

TABLE OF CONTENTS

1	General Information.....	4
1.1	Standardization	4
1.2	Odette '95 MC Program Functions	5
2	Installation.....	6
2.1	Initial Installation	6
2.1.1	ISDN connectivity	6
2.1.2	TCP/IP connectivity	9
2.2	Installing Updates.....	10
3	Odette '95 MC Program Functions	11
3.1	The Main Window	11
3.2	Address Administration.....	13
3.2.1	Add new partner entry	14
3.2.2	Copy partner record.....	18
3.2.3	Edit partner record.....	19
3.2.4	Delete Entry.....	30
3.3	Jobs	31
3.3.1	New Job.....	31
3.3.2	Change Job	36
3.3.3	Delete Job	37
3.4	Directory Overview	38
3.5	Program Options	39
3.5.1	Sheet General	39
3.5.2	Sheet ISDN.....	40
3.5.3	Sheet Remote Control.....	41
3.5.4	Sheet Postprocessing	43
3.5.5	Sheet Error Email	44
3.5.6	Sheet Sounds	45
3.5.7	Sheet Backup.....	46
3.5.8	Sheet EngDat.....	47
3.6	Using the ENGDAT-Module	48
3.6.1	Using the ENGDAT-Module (Send).....	48
3.6.2	Using the ENGDAT-Module (Receive).....	48
4	Add-on Module ENGPART	49
4.1	General Information	49
4.2	The ENGPART Main Menu.....	50
4.3	Functions of the ENGPART Main Menu	51
4.4	Before sending an ENGPART file.....	52
4.5	First time transmission.....	54
4.6	Evaluating received data.....	56
4.7	Sending and receiving engineering files.....	57
4.7.1	Sending engineering files	57
4.7.2	Receiving engineering files	58
4.8	What to do if....	59

- 5 Add-on Module Client/ Server..... 60**
 - 5.1 Installation60**
 - 5.1.1 Server 60
 - 5.1.2 Client 60
 - 5.1.3 Examples 61
 - 5.2 Operation62**
 - 5.2.1 Receiving data 65
 - 5.3 Administration Client/Server66**
- 6 Com-Secure (Automated Encryption)..... 67**
- 7 Appendix A: ENGPART (VDA Recommendation 4951) Mandatory Fields..... 68**
- 8 Appendix B: Translation ENGPART -> ENGDAT 69**
 - 8.1 Receiver (RDE)69**
 - 8.2 Files (EFC)69**
- 9 Appendix C: Remote Control of Odette '95 MC..... 70**
 - 9.1 Remote Control with Files70**
 - 9.2 Remote Control of Engpart72**
 - 9.3 Remote Monitoring73**
 - 9.4 Interface SWAN – Odette '95 MC74**
 - 9.4.1 SWAN – Odette '95 MC Connectivity..... 74
 - 9.4.2 SWAN – Odette '95 MC Messaging 75

1 General Information

1.1 Standardization

Odette (OFTP) is an ISDN data communication standard, which has been specified by "Odette International", an organisation formed by the automotive industry. The standard is described in a paper called "VDA recommendation 4914/2", published by the VDA (Verband der Automobilindustrie), the German national organisation for the automotive industry. The Odette '95 MC product range has been developed according to this recommendation.

The Odette protocol extends the X.25 standard specified by CCITT (International Telegraph and Telephone Consultative Committee; a predecessor organisation of the ITU-T) and is provided by the CAPI interface of the ISDN device.

Each Odette installation has got a unique Odette ID (Identification). This ID will be provided by the VDA (subject to additional charges) for users resident in Germany. Different rules and regulations may apply outside Germany. To establish a connection between two Odette systems, the opposite IDs must be known to both systems first. Moreover, a user-defined password is required for each communication partner.

Important:

Please close all other applications before starting Odette '95 MC. The application is memory intensive and might lead to conflicts or even system crashes on computers with limited resources.

1.2 Odette '95 MC Program Functions

	Odette'95 MC - BASE	Odette'95 MC Lite - BASE
<i>Integrated Functions :</i>		
OFTP over ISDN	X	X
OFTP over TCP/IP	X	X
Interface for multiple ISDN Channels	X	X
Interface for multiple TCP/IP Channels	X	X
EngDat version 1	X	
EngDat version 2	X	
Viewing of EngDat abstract	X	
EngDat: data compression (Gzip)	X	
Automated data reception	X	X
Automated data transmission	X	X
Support of secondary (indirect) service provider	X	X
Swan interface	X	X
Data transmission protocols	X	X
Free updates	X	X
Support free of charge	X	X
Remote control by other applications	X	X
Partner address administration	X	X
<i>Add-on modules :</i>		
Add-on module ISDN Channel	X	X
Add-on module TCP/IP Channel	X	X
Add-on module Client/Server	X	X
Add-on module EngPart	X	
Add-on module NT-Service	X	X
<i>EDI/EDIFACT-Expansions :</i>		
Base module EDI-Convert	X	X
Message modules EDIFACT	X	X
Message modules ODETTE	X	X
Message modules VDA	X	X
<i>Third parties add-on modules :</i>		
Com-Secure by gedas	X	X

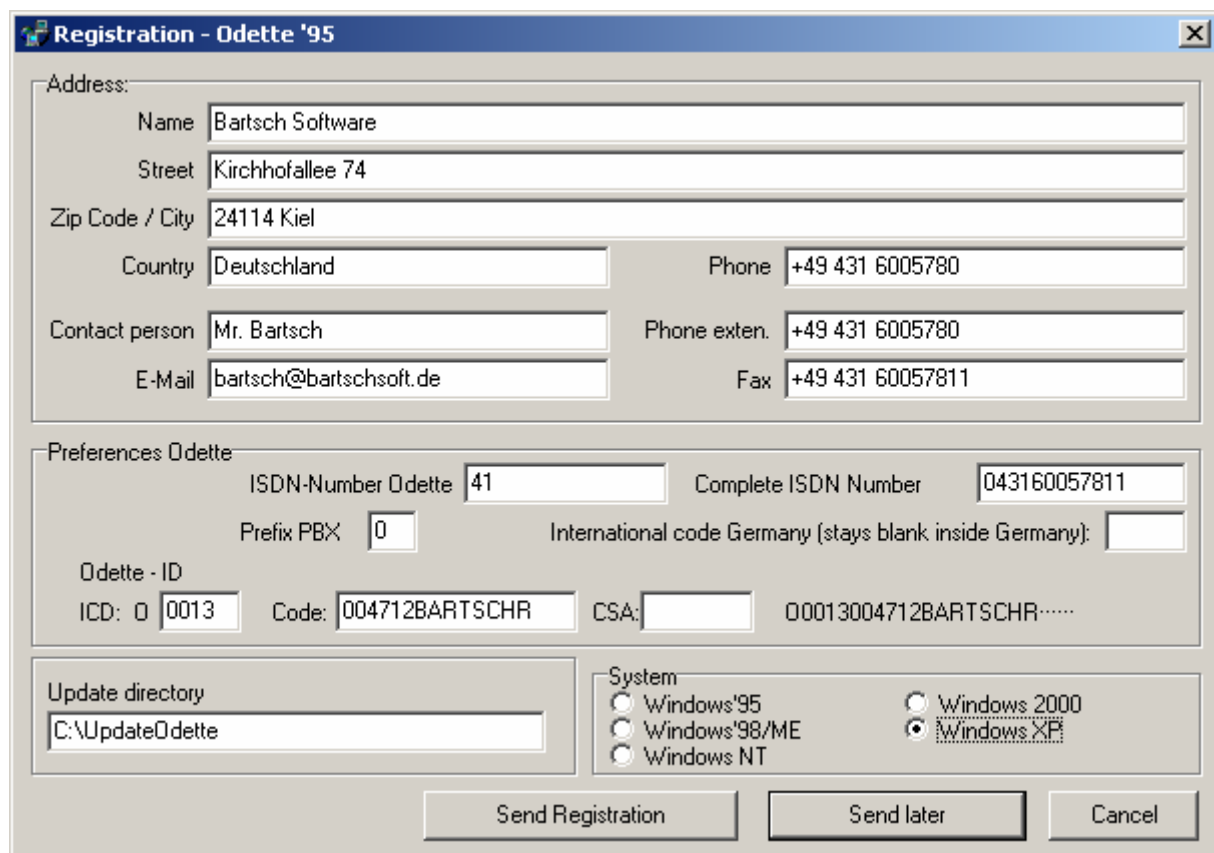
2 Installation

2.1 Initial Installation

2.1.1 ISDN connectivity

1. Minimum system requirements:
 - Pentium 90 with 32MB RAM.
 - 10MB disk space for installation.
 - Storage area for transferred files. (local disk or network)
 - ISDN device with suitable CAPI 2.0 driver¹
2. Execute "Odette95_e.exe" (packed) or "Setup.exe" (unpacked) and follow the instructions.
3. Click on the icon "Online Registration". Odette '95 MC cannot be used unless the registration has been successfully transmitted!

Please take care when entering your own Odette details!

A screenshot of the "Registration - Odette '95" dialog box. The window has a title bar with the text "Registration - Odette '95" and a close button. The main area is divided into several sections. The "Address:" section contains fields for Name (Bartsch Software), Street (Kirchhofallee 74), Zip Code / City (24114 Kiel), Country (Deutschland), Phone (+49 431 6005780), Contact person (Mr. Bartsch), Phone exten. (+49 431 6005780), E-Mail (bartsch@bartschsoft.de), and Fax (+49 431 60057811). The "Preferences Odette" section includes fields for ISDN-Number Odette (41), Complete ISDN Number (043160057811), Prefix PBX (0), International code Germany (stays blank inside Germany):, Odette - ID, ICD: 0 (0013), Code: (004712BARTSCHR), CSA:, and O0013004712BARTSCHR..... The "Update directory" section has a text box containing "C:\UpdateOdette". The "System" section has radio buttons for Windows'95, Windows'98/ME, Windows NT, Windows 2000, and Windows XP (which is selected). At the bottom, there are three buttons: "Send Registration", "Send later", and "Cancel".

¹ Odette'95 has been tested with ISDN cards from the company AVM. Other products might work as well but we cannot guarantee a trouble free operation in every case.

Enter your own address details accordingly as follows:

Field	Description / Values
Name	Complete company name
Street	Street name
Zip Code / City	Postal/Zip Code and City
Country	Country name
Contact person	Contact name of Odette '95 MC administrator
E-Mail	Contact email address of Odette '95 MC administrator
Phone	Contact phone number
Fax	Contact fax number

Enter your Odette preferences accordingly as follows:

Field	Description / Values
ISDN-Number Odette / Complete ISDN Number	<p>Insert the entire ISDN number in the two fields "<i>ISDN Number Odette</i>" and "<i>Complete ISDN Number</i>" (e.g. „04317209328"). Do not use international codes such as "+49"!</p> <p>In case your ISDN installation comes with the MSN (Multi Subscriber Numbering) facility, a unique number for incoming Odette calls can be entered under „<i>ISDN-Number Odette</i>". The same applies if your telephone system assigns unique device numbers (e.g. "22" or "124") to incoming calls. Please consult the documentation of your telephone system or get in touch with your service provider. Please review the hardware requirement should your installation be from a certain age. Some older installations might require a hardware upgrade first.</p> <p>Odette '95 MC can be connected to a shared ISDN line as long as the incoming calls are managed by the MSN facility. MSN is a facility whereby you can have more than one telephone numbers allocated to the same ISDN line. Outgoing calls never cause a problem, provided a free ISDN channel is available.</p> <p><u>Important details:</u> Do not use the "permanent number withhold" feature! Some partner installations might reject incoming calls immediately if they cannot identify the number. This may also apply if your telephone system transmits the collective calling number only.</p> <p>Odette '95 MC needs to be re-registered each time your ISDN dialling number changes. A faultless operation is warranted only, if the entered ISDN number matches the available number at the ISDN connection.</p>
Prefix PBX	Some telephone systems (PBX, Public Branch eXchange) require a "0" or "9" to get an outside line. Enter the appropriate number in the field "Prefix PBX" if this is applicable to your installation.
International code Germany (stays blank inside Germany)	Customers resident outside Germany have to enter the international dialling code to reach Germany in the field "International Code Germany" (in most cases "0049").
Odette – ID	<p>The Odette-ID consists of 4 parts:</p> <ul style="list-style-type: none"> • „0"

The first character is always the letter "O" and stands for Odette.

- ICD
Country code provided by your local Odette organisation, e.g. 0013 for Germany, 0932 for Great Britain, etc
- Code
Own Odette ID, must be unique.
- CSA
Computer sub address, optional

Please note:

- Use upper case characters, digits and following special characters: "/", "-", ".", "&", "(", ")"
- Do not use blanks inside the code fragment and special characters (umlauts) such as: "ä", "ö", "ü", "ñ", "ã", "á", "é", etc.

If you are installing Odette '95 MC for test purposes only, make sure that you do not use values such as "1111111111" or similar. This will lead almost certainly to input errors at the partner's side. It is strongly advised to use an Odette identification similar to:

ICD: 0815, Code: 004711TEST, CSA stays blank

ICD: 0013, Code: 005555BARTSCH, CSA stays blank

Please do not use this particular example; use your own company details to make up a suitable Odette identification!

For companies resident in Germany a regular Odette identification can be obtained from the federation of the automobile industry at an additional charge.

Address: *Verband der Automobilindustrie e.V.
Westendstr. 61
60325 Frankfurt / Main
Germany
Phone : Germany +49 69 97507 0*

Other countries may have similar institutions.

Automated Updates

This feature is no longer supported and might disappear with the release of future upgrades.

System

Choose the operating system running on your workstation.

Completing Registration

Click on "Send Registration" to submit the online registration (via ISDN). Please check your entries carefully before pressing this button!

Send later

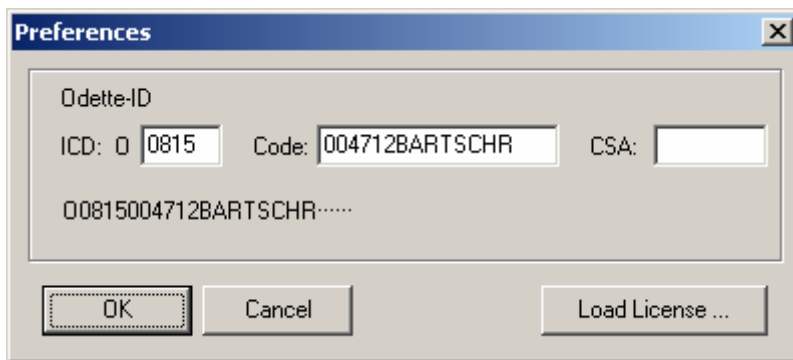
Click on "Send later" to suspend the registration process. Your entries will be stored. You may resume the registration at any time. A successful registration is required to run Odette '95 MC.

Cancel

Click on "Cancel" to abort the registration process. Your entries will be lost.

2.1.2 TCP/IP connectivity

1. Minimum System Requirements:
 - Pentium 90 with 32MB RAM.
 - 10MB disk space for installation.
 - Storage area for transferred files. (local disk or network)
 - TCP/IP socket
2. Execute "Odette_e.exe" (packed) or "Setup.exe" (unpacked) and follow the instructions.
3. Click on the icon "Preferences". Odette'95 cannot be used unless the preferences have been successfully entered!



Enter your Odette identification accordingly.

2.2 Installing Updates

Updates are freely available to download from www.bartschsoft.de .

Always make a backup of the Odette '95 MC folder, before installing updates. It will be easier to recover your previous settings in case the installation fails.

Close Odette '95 MC and execute "Setup.exe" (unpacked) and follow the instructions. Unless the program explicitly guides you to start the online registration, there is no need to register again. When the upgrade process has been completed successfully you can run Odette '95 MC as usual.

Special note for ISDN connectivity:

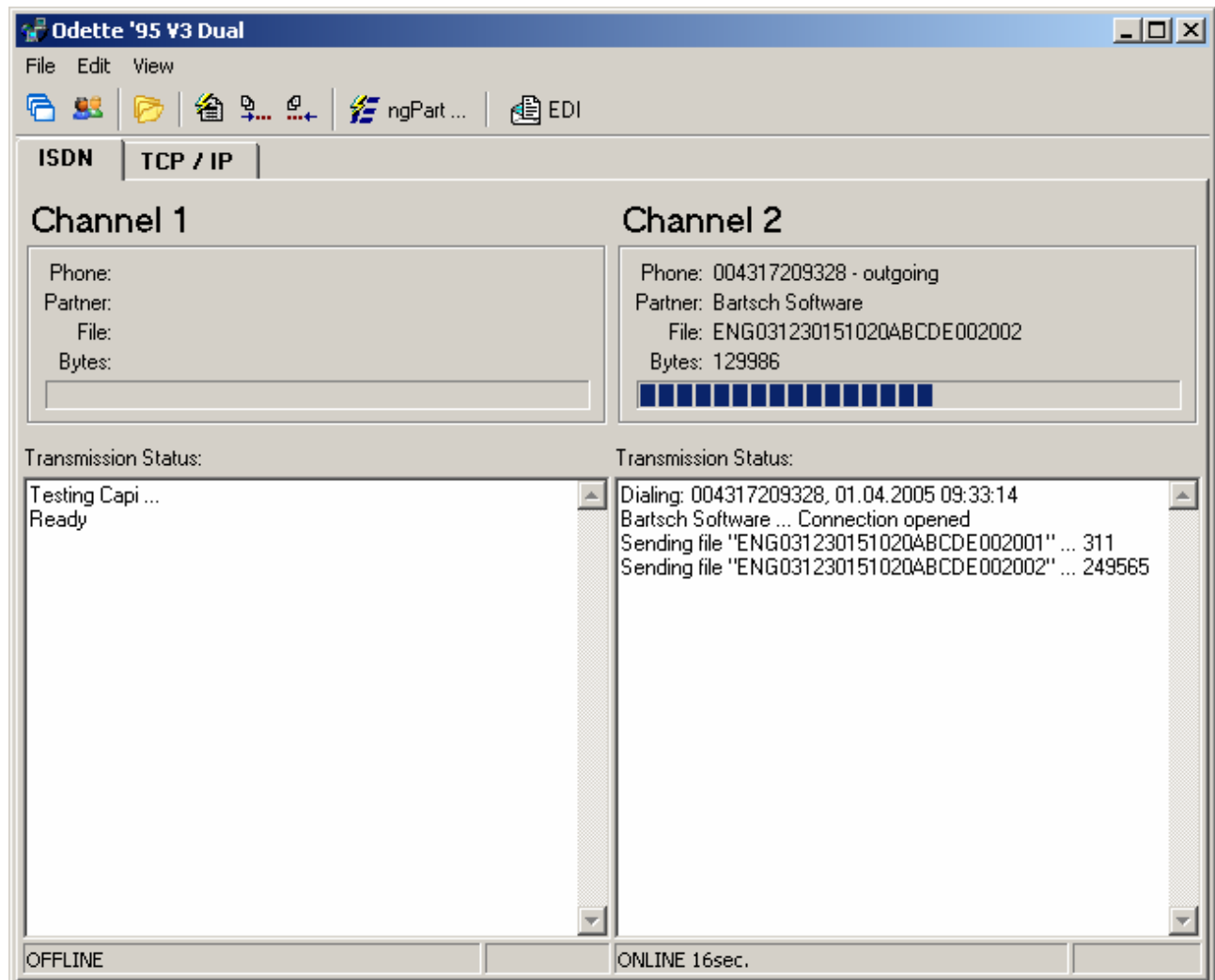
If the entry "Online-Registration" has disappeared from the Windows start menu it can be restored as follows:

1. Create a new link
2. Enter as command line "C:\Programs\Odette95\Odette.exe REGISTER". The path might be different on your installation and depends on where Odette '95 MC has been installed.
3. Call the new link "Online-Registration" and let Windows complete the process. The "Online-Registration" is now available again.

3 Odette '95 MC Program Functions

3.1 The Main Window

The main window shows the current transmission status. All sub-functions can be accessed from the main window.



(Screenshot from Odette '95 MC/2 Dual)

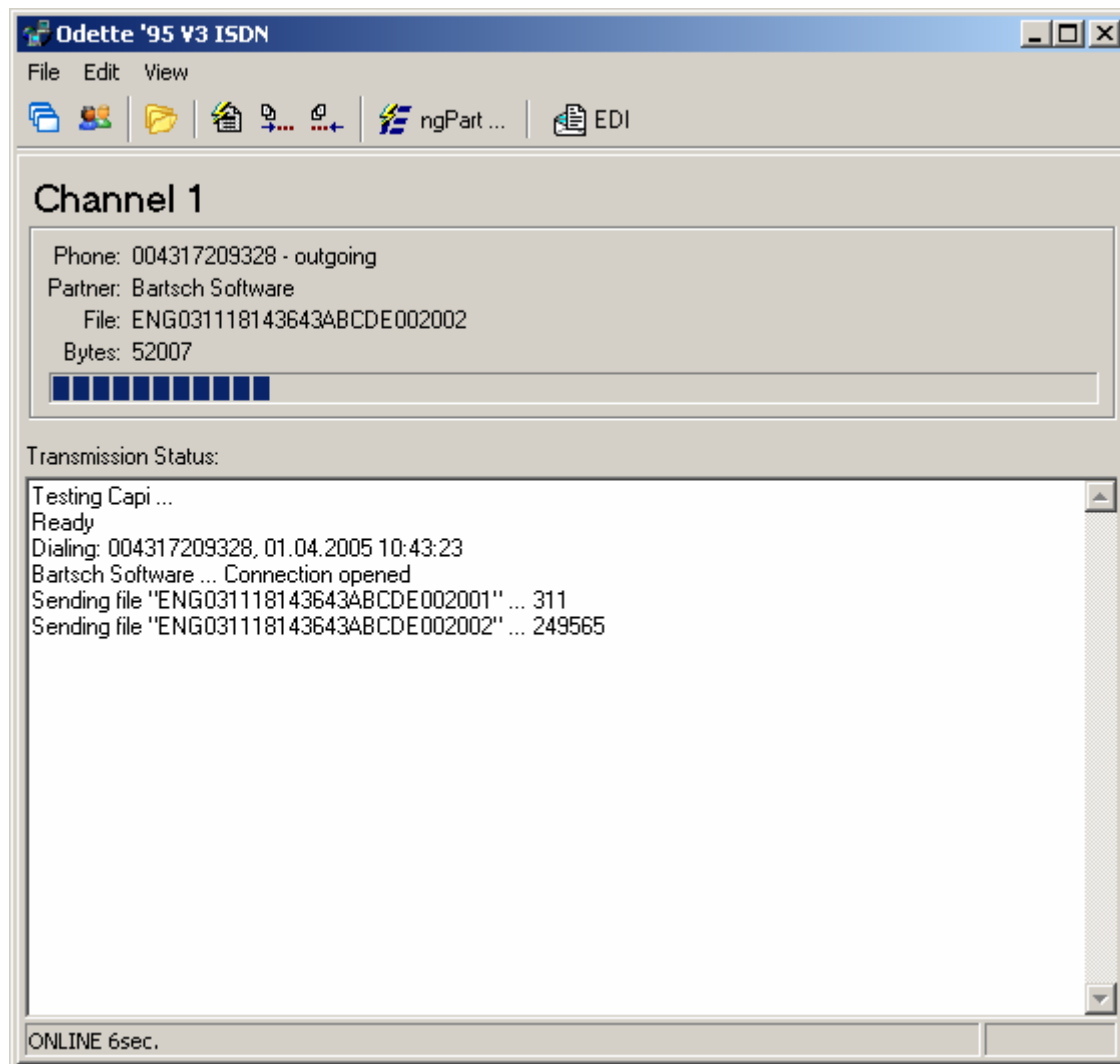
The two connection types ISDN and TCP/IP are accessible in separate tabs.

The transmission flow and any occurring errors will be displayed continuously in the status list. Each channel has its own screen and status list. All lists saved in files named "screen#.txt" in the installation directory periodically (# Channel Number).

The text „**OFFLINE**” at the bottom of the window indicates that the channel is both ready to transmit and to receive. „**ONLINE**” indicates that a transmission is running at this moment. In this case the elapsed time of the current transmission is shown.






“**Charging units**” are being displayed to indicate the cost of the running transmission. This feature depends on the type of available ISDN service and CAPI driver.



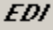
The upper status field of a channel displays partner's IP address or ISDN number, partner's name, the name of the file currently being transmitted and a status bar. After the transfer, partner's address and name remain in this field.



(Screenshot from Odette '95 MC/1 ISDN)

Following functions are available on the main window:

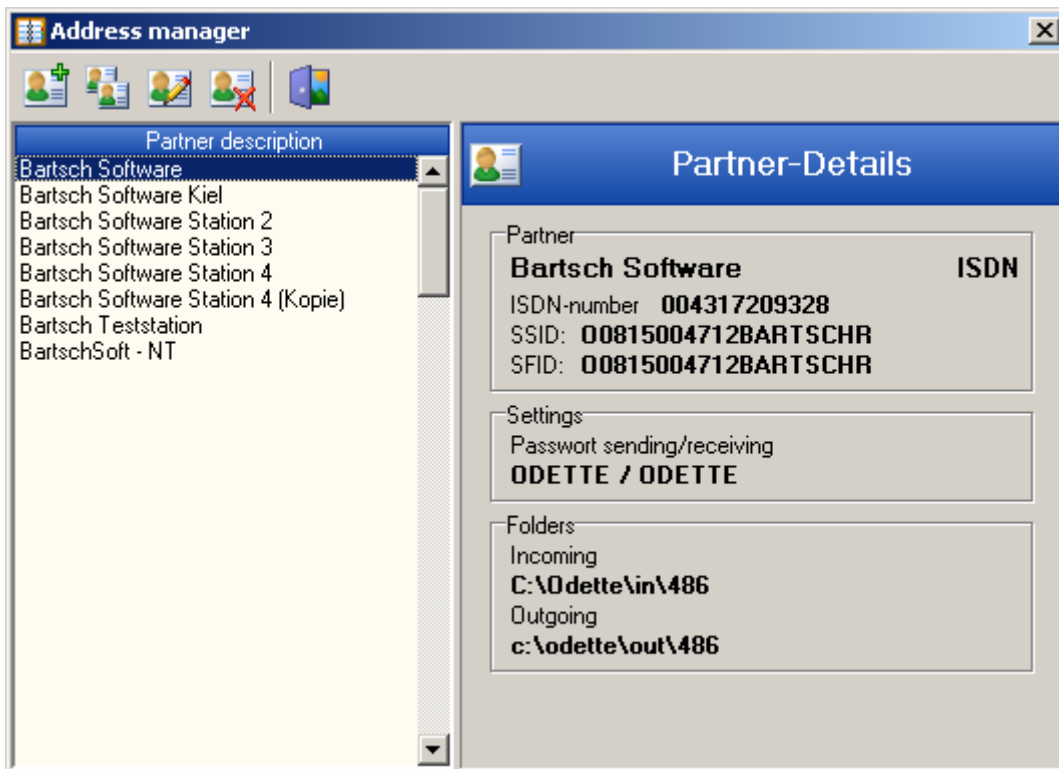
Option	Description
	Job List: New "Sending Jobs" can be created and existing jobs can be changed or deleted.
	Addresses: Address administration - add and change your partner's address details.
	Directories: An overview is displayed of all received, successfully transmitted or ready to be transmitted files, sorted by partner. In the standard version of Odette '95 MC ENGDAT evaluation can be started here.
	Protocol – Online: The file "Online.txt" is displayed in a text editor window. It contains a continuous list of all successful connections.
	Protocol – Transferred Files; The file "Prot_out.txt" contains a list of all successfully transmitted files.




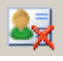

- 
Protocol – Received Files: The file “Prot_in.txt” contains a list of all successfully received files.
- 
Access ENGPART Main Screen. The add-on module ENGPART is not included in the standard version of Odette '95 MC.
- 
Starts the base module “EDI-Convert”. For further details see manual “EDI-Convert”.

3.2 Address Administration

Prior to data transmission, create an address record for your partner (Name, ISDN-No. or IP-No., Odette-Identification,..) in the address administration by pressing the “Add”-Button.

To edit, copy or delete a partner address choose the entry in the list and then press the designated button.

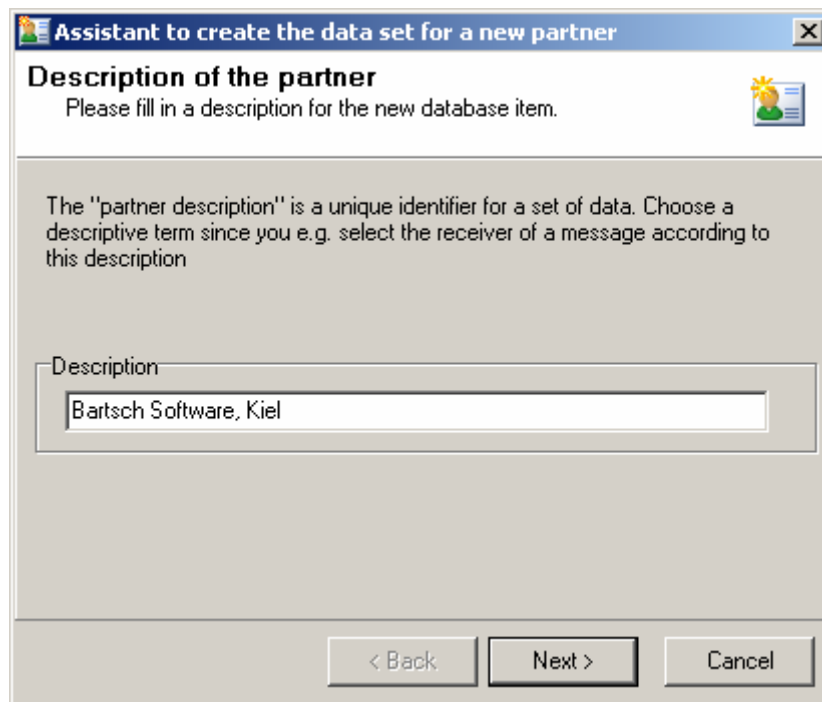


Option	Description
	Add new partner record
	Copy existing partner record
	Edit existing partner record
	Delete existing partner record
	Close Address Administration

3.2.1 Add new partner entry

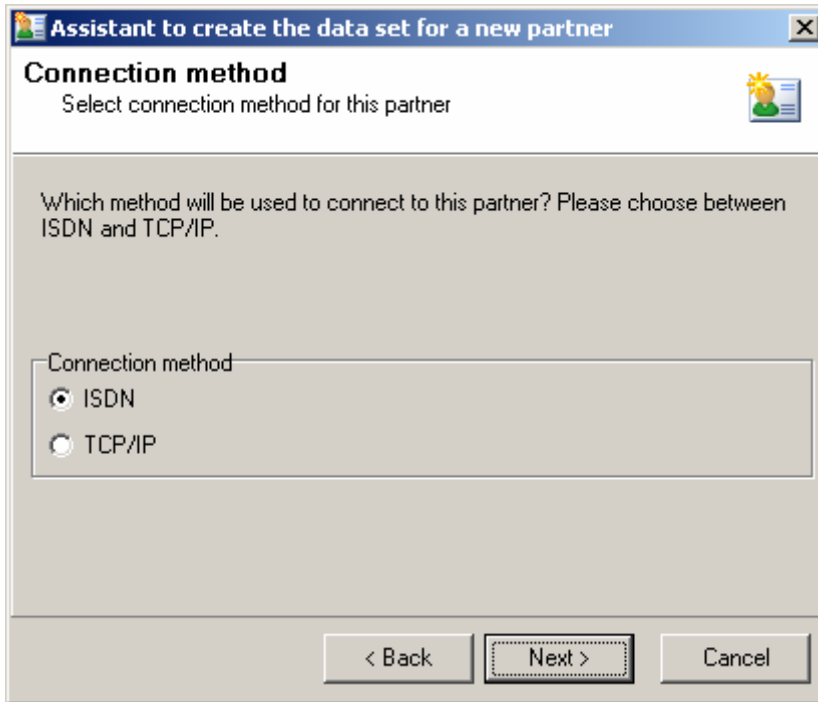


Press the „Add“-Button to open the wizard for a new partner record. The wizard guides you through the process. All data entered in the wizard can be changed by editing the existing partner entry.



Enter a unique description for the new partner entry.

Press „Next >“.



Assistant to create the data set for a new partner

Connection method
Select connection method for this partner

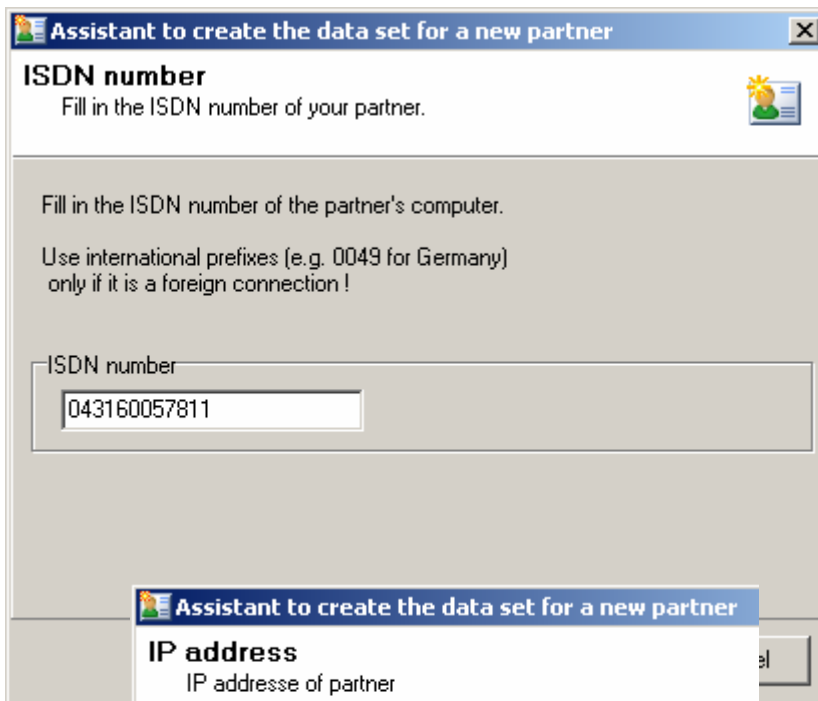
Which method will be used to connect to this partner? Please choose between ISDN and TCP/IP.

Connection method

ISDN
 TCP/IP

< Back Next > Cancel

Select the connection type used to contact to your partner.



Assistant to create the data set for a new partner

ISDN number
Fill in the ISDN number of your partner.

Fill in the ISDN number of the partner's computer.
Use international prefixes (e.g. 0049 for Germany) only if it is a foreign connection !

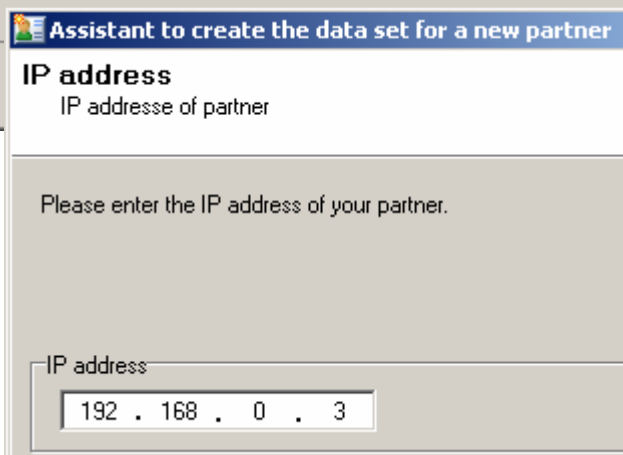
ISDN number
043160057811

Assistant to create the data set for a new partner
IP address
IP address of partner

Enter the complete ISDN-No, of your partner's installation. ISDN numbers have to be entered without any separators or spaces.

For international calls add the international code.

Or enter the IP address of your partner.

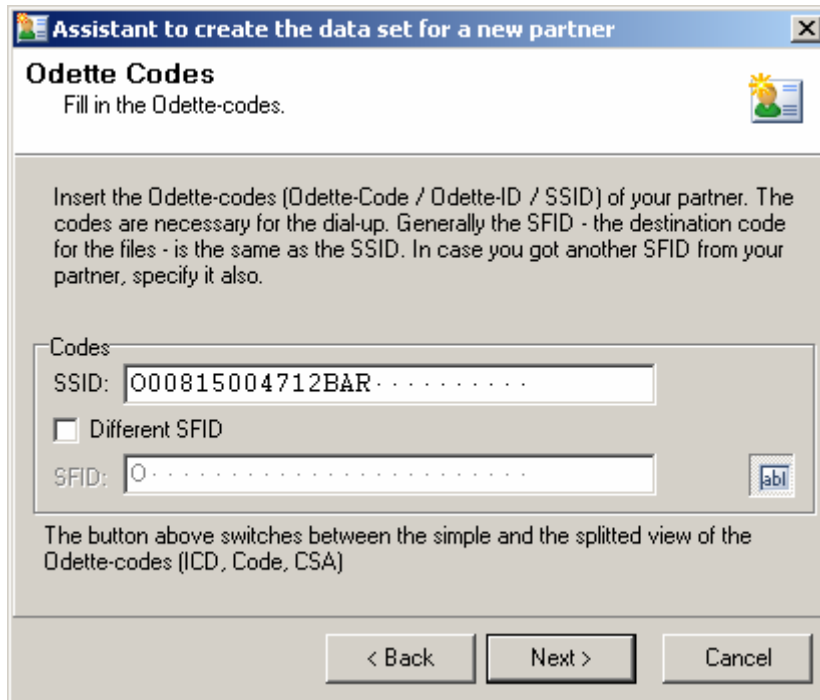


Assistant to create the data set for a new partner

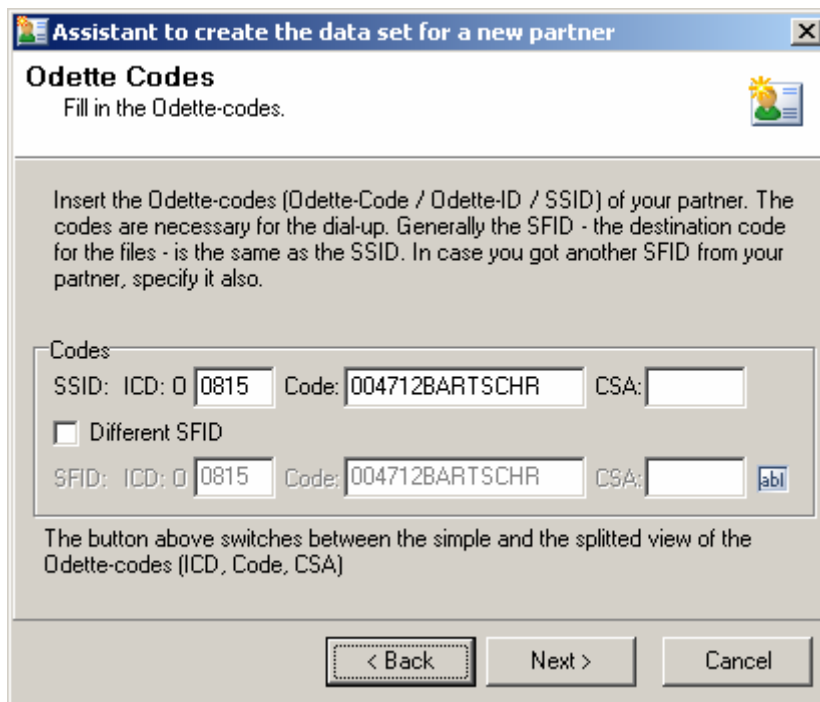
IP address
IP address of partner

Please enter the IP address of your partner.

IP address
192 . 168 . 0 . 3



Ask your partner for his Odette Identification and enter it here. Without correct Odette Identification data transmission will fail.



SFID is the Destination ID for files. It should be equal to the Odette Identification. Change this ID only at your partner's requests.

Note: some Odette users indicate their Identification as follows:

"O0815004712BARTSCHRTEST", that means:

"O" = Odette

"0815" = ICD

"004712BARTSCHR" = Code

"TEST" = CSA

The maximum lengths of the fields are:

ICD= 4

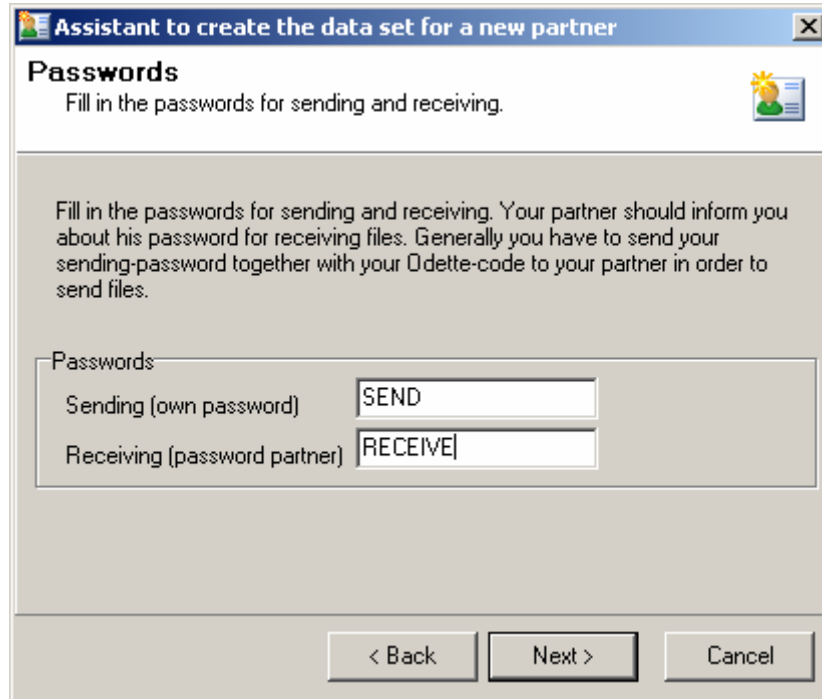
Code=14

CSA= 6 characters

An identification like: „O0815004712BARTSCHRONALD“ would have to be entered as:

CSA: 0815, Code: 004712BARTSCHR, CSA: ONALD.

Press the blue symbol to switch between the 2 methods.



Assistant to create the data set for a new partner

Passwords
Fill in the passwords for sending and receiving.

Fill in the passwords for sending and receiving. Your partner should inform you about his password for receiving files. Generally you have to send your sending-password together with your Odette-code to your partner in order to send files.

Passwords

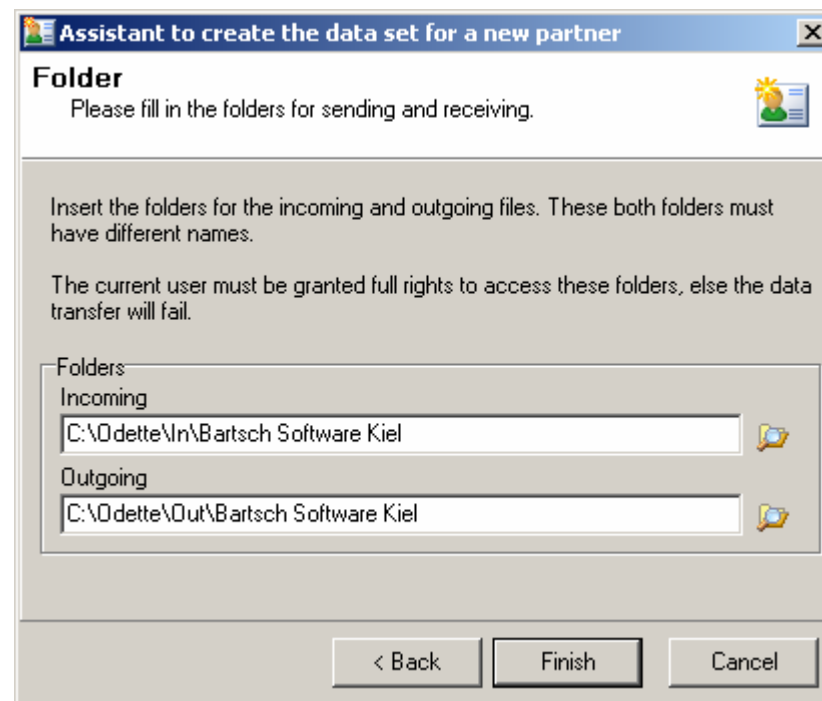
Sending (own password)

Receiving (password partner)

< Back Next > Cancel

Both sides must agree on a sending and receiving password. Restrictions are as follows:

- Upper case characters only
- digits
- no national specific characters
- Special characters as follows: / - . & ()
- Blanks are only allowed at end of fields; no blanks in text
- Maximal 8 characters



Assistant to create the data set for a new partner

Folder
Please fill in the folders for sending and receiving.

Insert the folders for the incoming and outgoing files. These both folders must have different names.

The current user must be granted full rights to access these folders, else the data transfer will fail.

Folders

Incoming

Outgoing

< Back Finish Cancel

Select incoming- and outgoing directory for your partner. Separate directories for each partner must be provided. Check that you have full access rights to the directories at all times.

Press „Finish“ to complete the wizard. A new partner record will be added to the Address Administration and can be used immediately to transmit data.

To add additional information to the partner (Special Functions, EngDat settings) choose the entry in the list and press „Edit“.

3.2.2 Copy partner record



To duplicate an address entry select the contact followed by pressing „Copy“. A new partner record will be added to the Address Administration and the screen for editing partner record will be opened. Change the designated information and save the record.

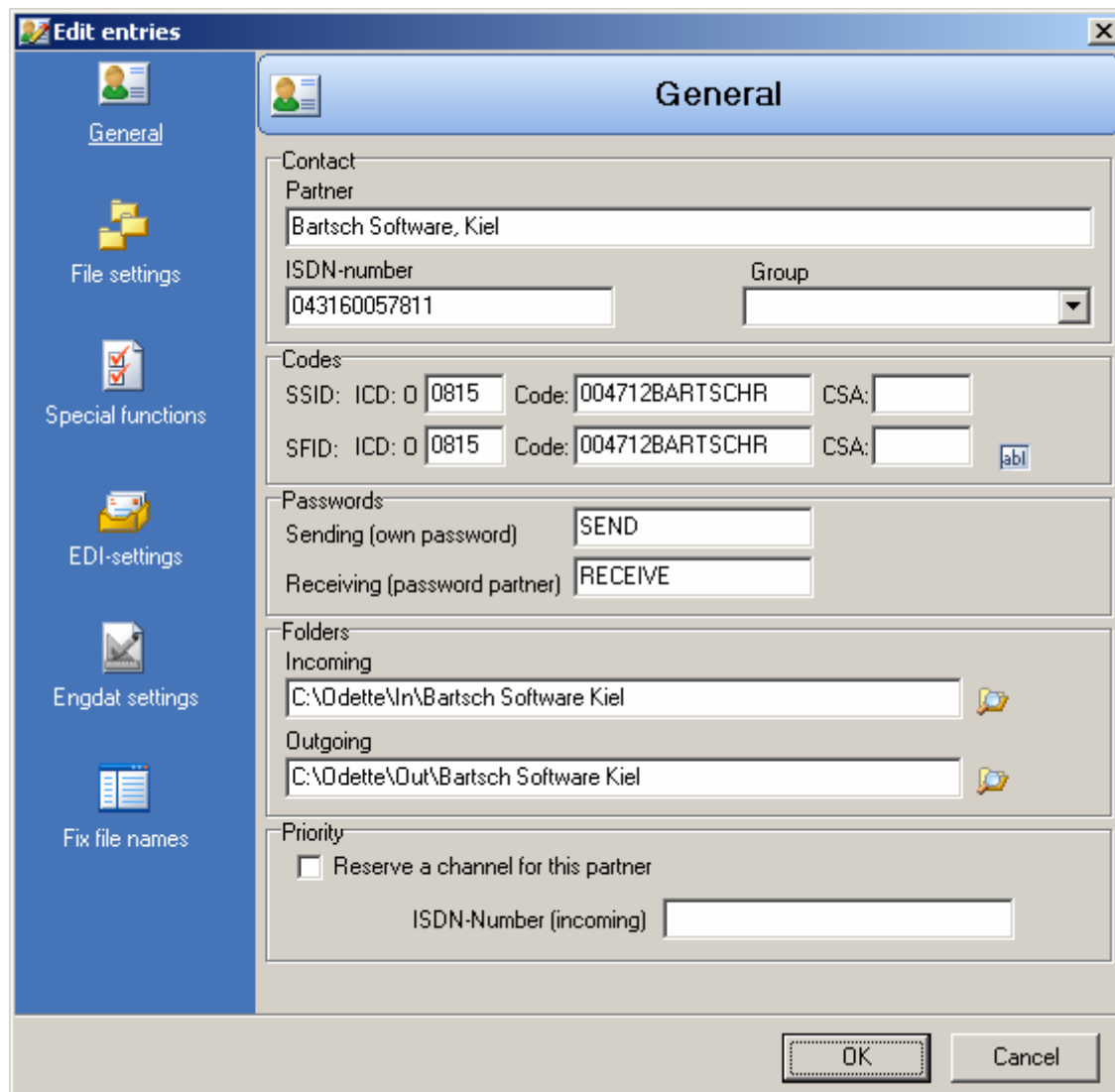
3.2.3 Edit partner record



Edit existing partner record. A partner record is separated into multiple data sheets. The first data sheet opened is "General". Open different data sheets by pressing one of the symbols on the left side.

3.2.3.1 Data Sheet General

The data sheet General contains all information that has been entered using the wizard.



The screenshot shows the 'Edit entries' dialog box with the 'General' data sheet selected. The dialog has a blue sidebar on the left with icons for 'General', 'File settings', 'Special functions', 'EDI-settings', 'Engdat settings', and 'Fix file names'. The main area is titled 'General' and contains the following fields:

- Contact Partner:** Bartsch Software, Kiel
- ISDN-number:** 043160057811
- Group:** (dropdown menu)
- Codes:**
 - SSID: ICD: 0 0815 Code: 004712BARTSCHR CSA: (empty)
 - SFID: ICD: 0 0815 Code: 004712BARTSCHR CSA: (empty) [abl]
- Passwords:**
 - Sending (own password): SEND
 - Receiving (password partner): RECEIVE
- Folders:**
 - Incoming: C:\0dette\In\Bartsch Software Kiel
 - Outgoing: C:\0dette\Out\Bartsch Software Kiel
- Priority:**
 - Reserve a channel for this partner
 - ISDN-Number (incoming): (empty)

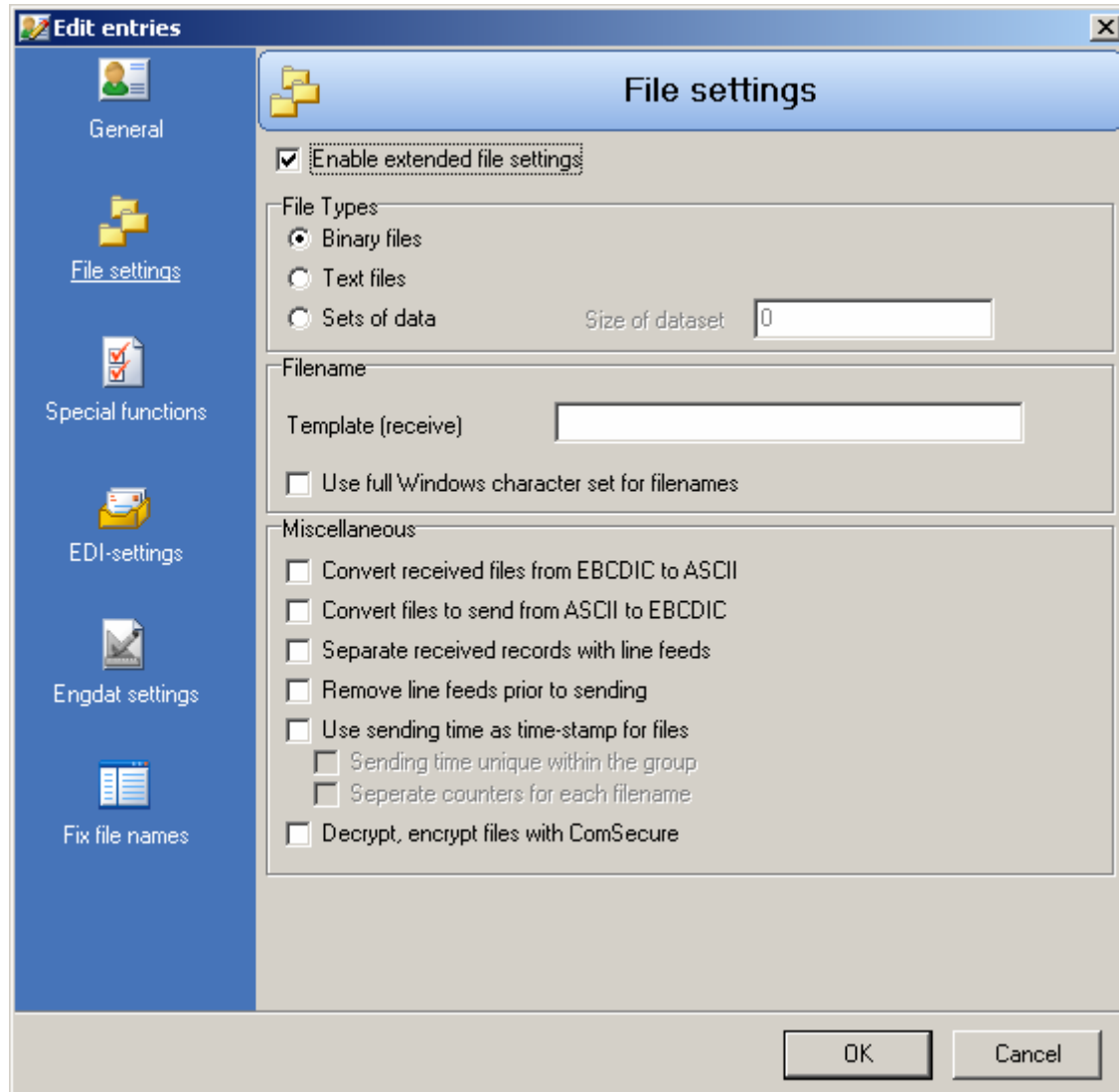
At the bottom right, there are 'OK' and 'Cancel' buttons.

Field „Priority“ is available for 2 Channel Version only. One channel will be reserved for all partners exclusively if checkbox "Reserve a channel for this partner" is enabled. If no partner has this checkbox enabled both channels are available without restrictions.

Assign the partner to a group entering a new group name or selecting an existing group. This is useful if there are multiple address entries for one single partner. All outgoing folders of all partners in a group will be searched if a receipt comes in.

3.2.3.2 Data Sheet File Settings

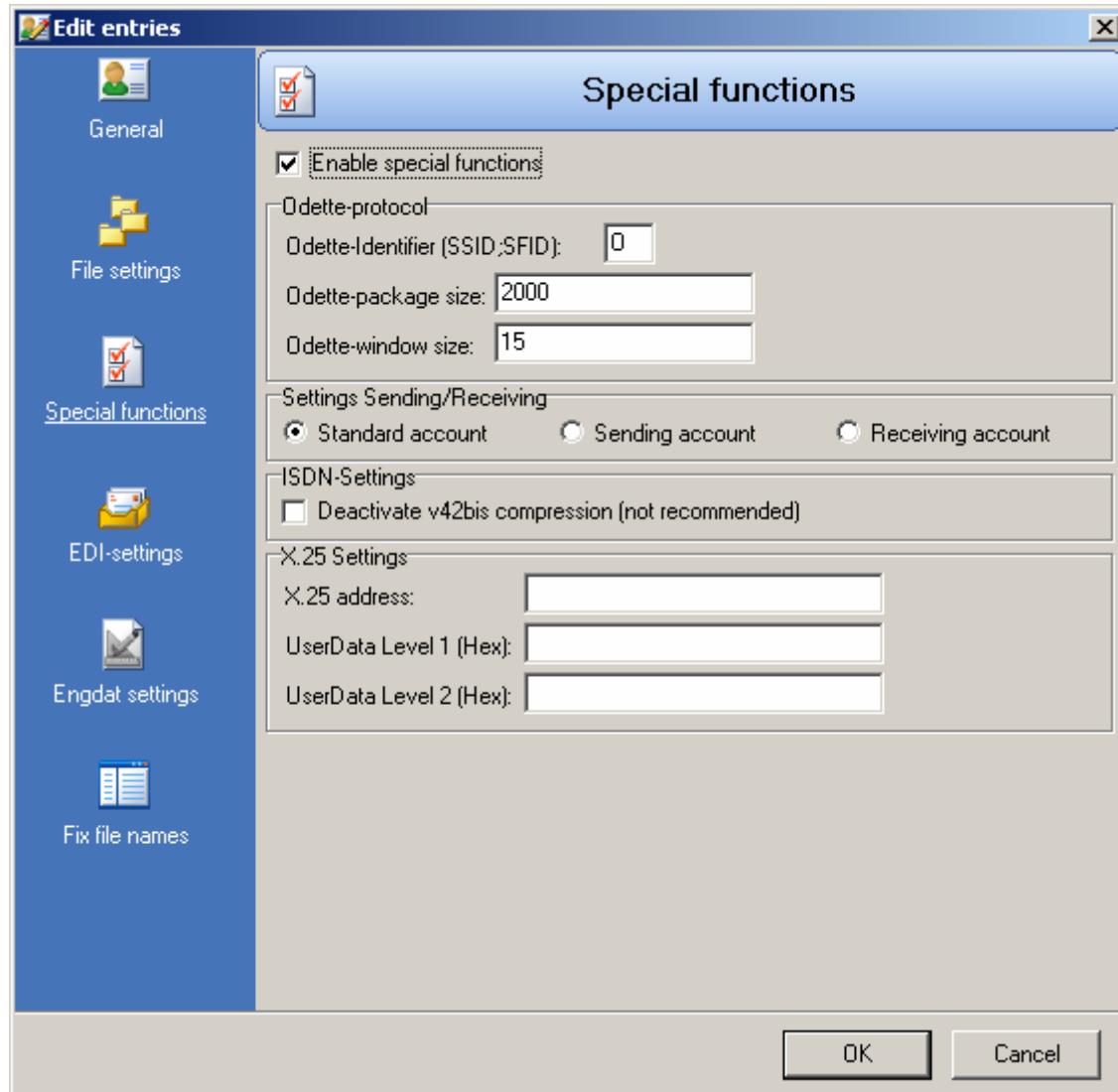
Usually the settings in this data sheet do not have to be changed. Only make changes if requested by your partner.



Option	Description								
File types	By default, the "File type" is set to "Binary files". Only change the file type at your partner's request. The setting "Fixed records" splits a file into records of equal length. The size can be determined in the field "Record size". This option is primary used for transfers with commercial data. If EngDat is used, the setting has to be "Binary files".								
Filename Template (Receive)	<p>This template is used for files on the local hard-drive. The structure must correspond to Windows regulation for file names.</p> <p>Exceptions are as follows :</p> <ul style="list-style-type: none"> * Adds the original file name # Adds a continuous number <p>Example:</p> <table data-bbox="549 698 1129 819"> <tr> <td>Template :</td> <td>AB*###</td> </tr> <tr> <td>Original file name (Send) :</td> <td>invoice.txt</td> </tr> <tr> <td>Local file name (Receipt) :</td> <td>ABinvoice001.txt</td> </tr> <tr> <td>Next local file name (Receipt) :</td> <td>ABinvoice002.txt</td> </tr> </table>	Template :	AB*###	Original file name (Send) :	invoice.txt	Local file name (Receipt) :	ABinvoice001.txt	Next local file name (Receipt) :	ABinvoice002.txt
Template :	AB*###								
Original file name (Send) :	invoice.txt								
Local file name (Receipt) :	ABinvoice001.txt								
Next local file name (Receipt) :	ABinvoice002.txt								
Other Options Received Files from EBCDIC to ASCII / Files to be sent from ANSI to EBCDIC	The files can be converted immediately after reception if the partner sends files in EBCDIC format instead of ASCII or ANSI format. The name of this newly created file is the same as the original file name, but marked with a suffix ".asc". The original file remains unchanged.								
Other Options Add Linefeeds between records	When using the file format „records“, each single record ends with a separator bit. If activated, the separator bit will be replaced by the characters „Carriage Return“ (ASCII-Code 13) and „Line Feed“ (ASCII-Code-10).								

3.2.3.3 Data Sheet Special Functions

Usually the settings in this data sheet do not have to be changed. Only make changes if requested by your partner.

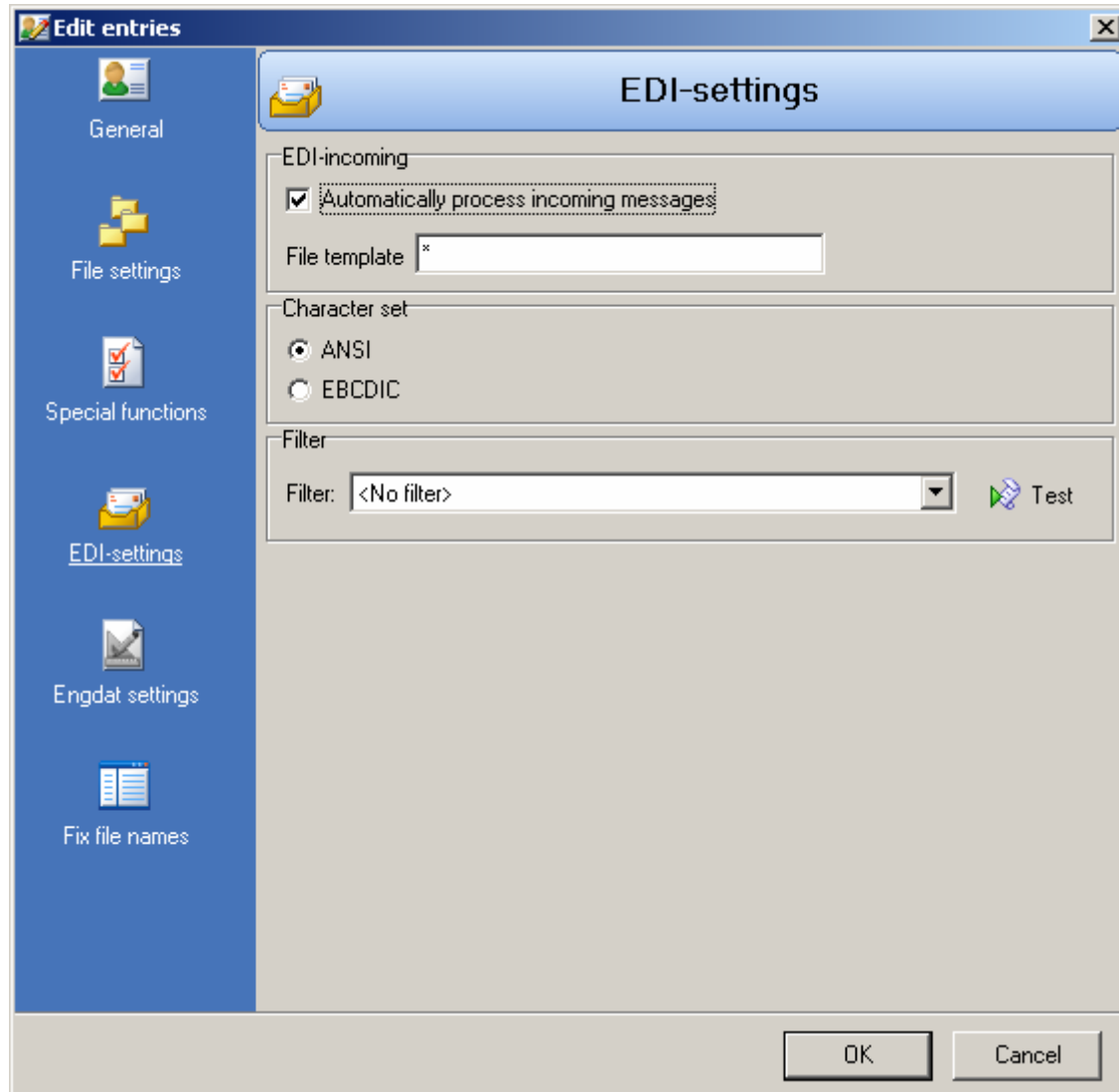


Option	Description
X-25 Settings	
X-25 Address	In the X.25 protocol field, a further number can be entered. This is not required for ISDN-connections. Odette '95 MC always registers the ISDN-number of the partner. If the partner uses an X.25 network, a forwarding address is necessary.
User Data Level1 (Hex) User Data Level2 (Hex)	Few Odette installations recommend fixed key values for these fields. Data is set in hexadecimal format, e.g. 3FA0. Usually the fields left blank.
Odette-Protocol	
Odette Identifier (SSID,SFID)	The first character of the Odette-ID is always "O". If the partner uses another character, enter it here.
Odette Packet Size, Odette Window Size	The packet and window sizes are determined automatically in the Odette-protocol through mutual agreement. If the partner's software requires fixed sizes, set it here. The smaller the packet and window sizes, the slower the file transfer speed. For best results use the predefined values of Odette '95 MC.

3.2.3.4 Data Sheet EDI-Settings

EDI-Settings available only if „Base Module EDI-Convert“ is installed.

The EDIConvert-Manager provides creation and editing of files in EDIFACT-format. For further details see manual “EDI-Convert”.



Option	Description
EDI-Receipt	
Automated processing of incoming messages	Defines delegation of incoming files to the Base Module EDI-Convert for further processing.
File mask	Defines which type of files is delegated. E.g. „*“ delegates all files, „*.txt“ delegates files with the extension „.txt“ only.
Code Page	
ANSII, EBCDIC	Windows code page is ANSI. Usually EdiFact messages will be transmitted in ANSI. VDA messages use the old EBCDIC code page, too. If VDA messages shall be received in that standard this option must be activated. Please note that the EBCDIC converter (in Special Functions) has to be turned off.

3.2.3.5 Data Sheet EngDat-Preferences

General Information

EngDat is the abbreviation for „Engineering Data“ and is often used for transmitting technical data, e.g. CAD data. This feature can be disregarded for commercial data, e.g. packing lists. EngDat provides the transmission of data with additional information, e.g. sender, receiver department. Transmitted files are renamed and added with additional information. For each transmission an EngDat file will be created (EngDat Abstract File) that contains information on all transmitted file in the job. Example:

```
ENG04081216355400000003001  
ENG04081216355400000003002  
ENG04081216355400000003003
```

In this case 2 files are sent (...002 and ...003). The first file (ENG04081216355400000003001) contains information about the two others. The file name identifies an EngDat file. The contents has to be unpacked. The file name contains the date and time the file has been created by the sender. Here 12. Aug 2004, 16:35:54 .

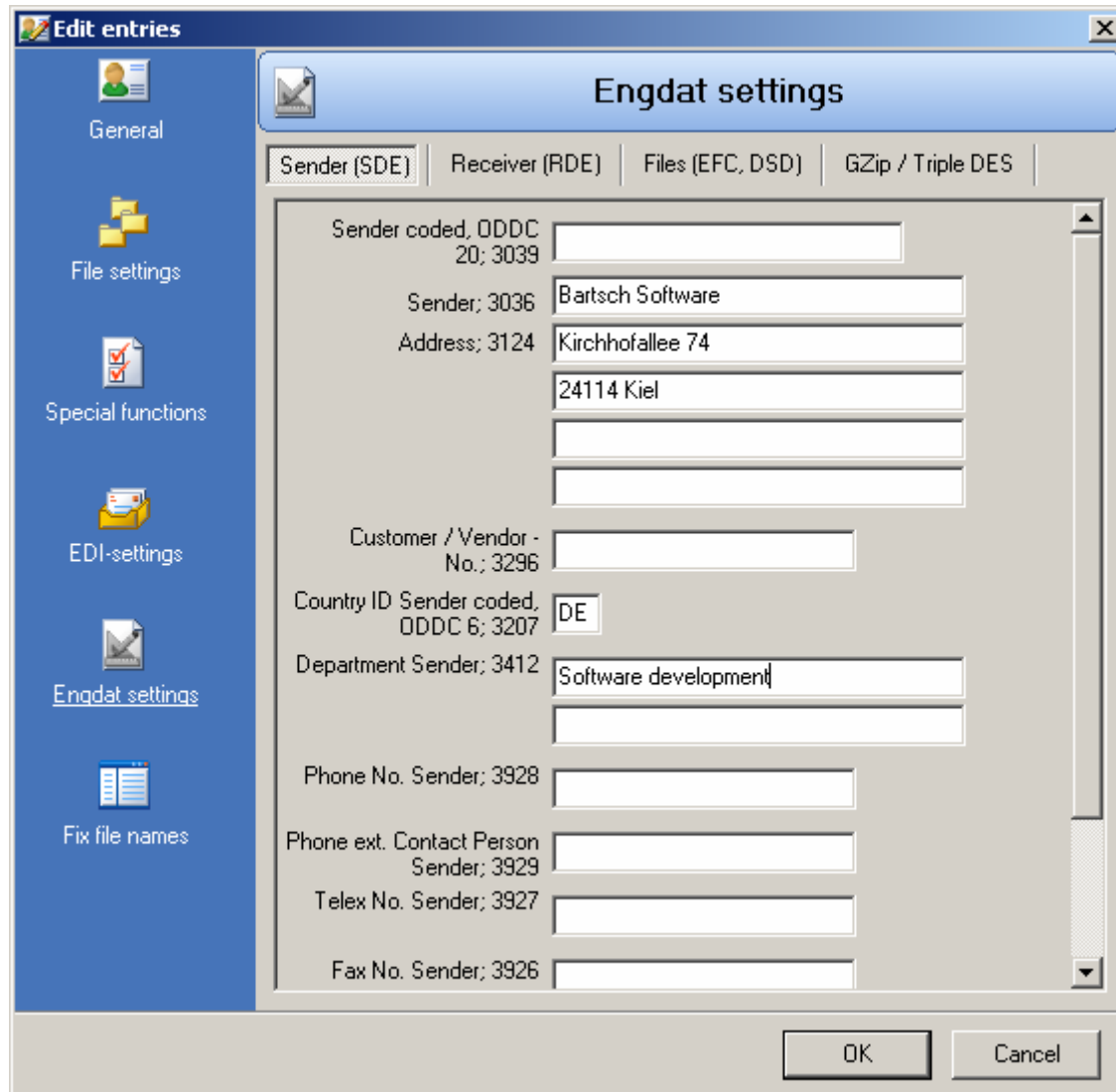
Some companies demand the transmission in EngDat format.

Fill out the EngDat-Sheet

The EngDat sheet consists of four registers.

To activate EngDat for the selected partner turn on option „Active“ in the register „Receiver“.

Odette '95 MC will convert all files prior to transmission into EngDat format except already converted files in EngDat format.



Engdat settings

Sender (SDE) | Receiver (RDE) | Files (EFC, DSD) | GZip / Triple DES

Sender coded, ODDC 20; 3039

Sender; 3036

Address; 3124

Customer / Vendor - No.; 3296

Country ID Sender coded, ODDC 6; 3207

Department Sender; 3412

Phone No. Sender; 3928

Phone ext. Contact Person Sender; 3929

Telex No. Sender; 3927

Fax No. Sender; 3926

OK Cancel

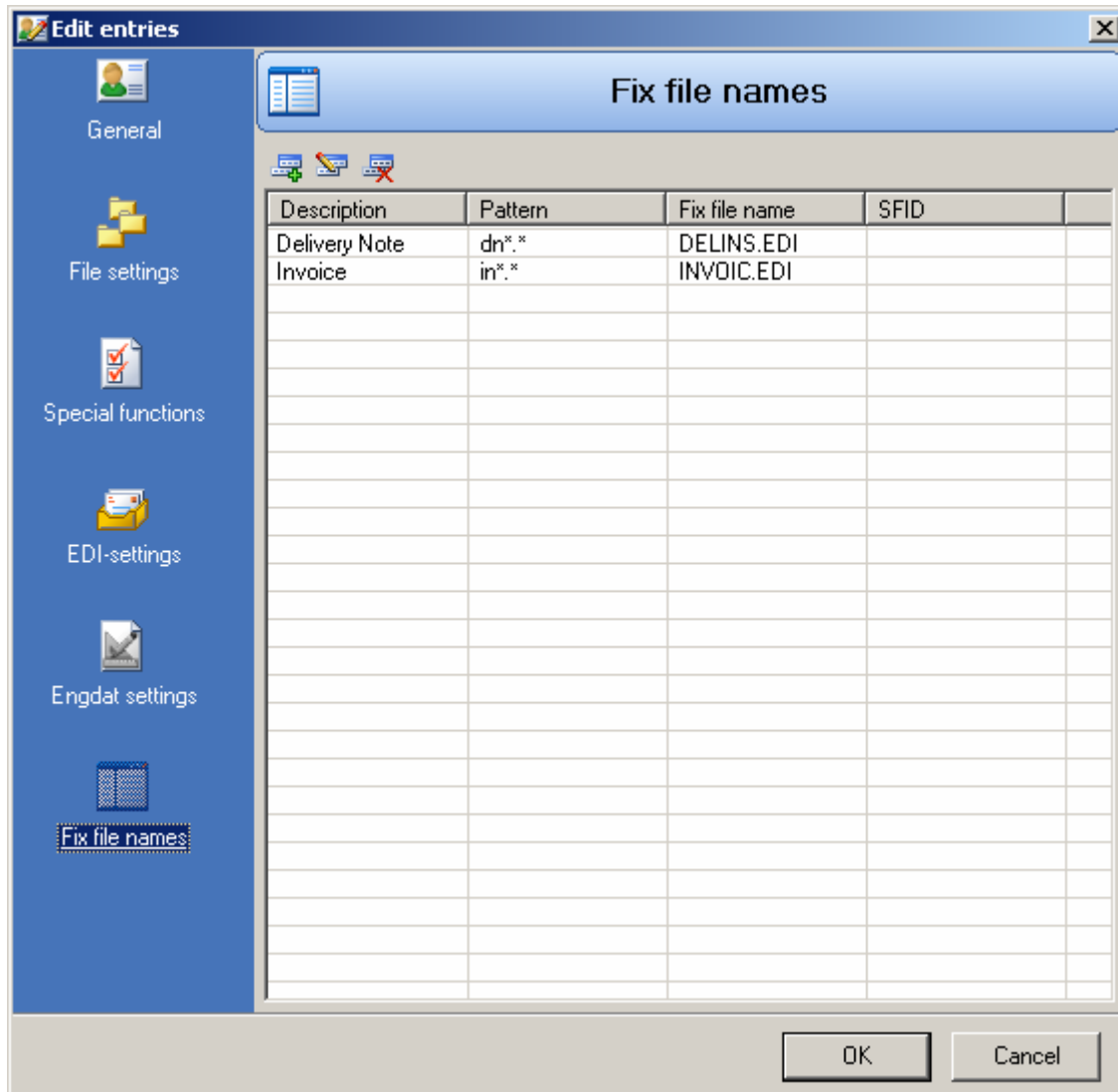
- All inputs in EngDat are optional, i.e. no input field needs to be filled. The code assigned to the individual input fields corresponds to the VDA recommendation 4951. Some fields require coded entries. Larger Odette partners will inform you about the required settings. Consult the recommendation to find out about the detailed settings. The German version can be ordered from:

Verband der Automobilindustrie e.V.
 Westendstr. 61
 60325 Frankfurt / Main
 Germany

- Your own company details can be entered in the "Sender (SDE)" tab. The field "Customer / Vendor No." should be left empty. Partner details can be entered in the "Receiver (RDE)" tab. Larger Odette partners will advise you on their EngDat requirements. Some companies for an example use the forwarding address receiver (EngDat S0003-S0010) to distribute the EngDat files internally. This code must be give to you by the partner to guarantee a flawless transfer.

- Most larger Odette partners will filter (distribute internally) all incoming data by analysing the EngDat ID. This is a 5-digit code that represents the receiver “address” of an individual working at the partner’s location and will appear in the EngDat file name. This setting has to be agreed by both partners. Code page „UNOC“ should always be selected; this is the standard Windows character set. Modify this setting only on your partner’s request.
- All entered details are permanently stored and associated with the selected Odette partner. However, these settings can be modified temporarily before sending a particular file that does not match the permanent details. See section “3.3.1 New Job” for further information about how to change EngDat details temporarily. The file format (EngDat 6912) for example can be IGES (Code = IGS) or text (Code = 646). The system name (EngDat 4882) CATIA RS 6000 and the purpose (EngDat 9908) might be an offer (Code = TOD).

3.2.3.6 Data Sheet Fixed Filenames



Some partners need, especially for EDI-Files, fixed filenames to process received data files. This function enables you to rename files to fixed filenames prior sending. There are no changes made to the local original filenames.

The easiest case is if only one fixed filename is used by your partner. Just put in a * into the field "Mask" and enter the requested filename into the field "Fixed Filename". If each message type or location must have a different filename, the local filenames must have distinguishing features. This feature has to be entered into the field "Mask".

If a local filename does not fit to the given mask the original filename will be used for transmission. Another SFID different to the general settings also has to be entered here. Different to other input fields a leading "O" must be entered.

Following parameters are available for fixed filenames:


- The character # is a wildcard for a serial number. The number of character # defines the length of the serial number. For each partner a separate serial number is used.
- The character \$ does the same as the character # but only one serial number for all partners is used.
- The character * is the wildcard for the original filename. If the length of the resulting filename exceeds 26 characters the filename will be truncated to 26 characters.

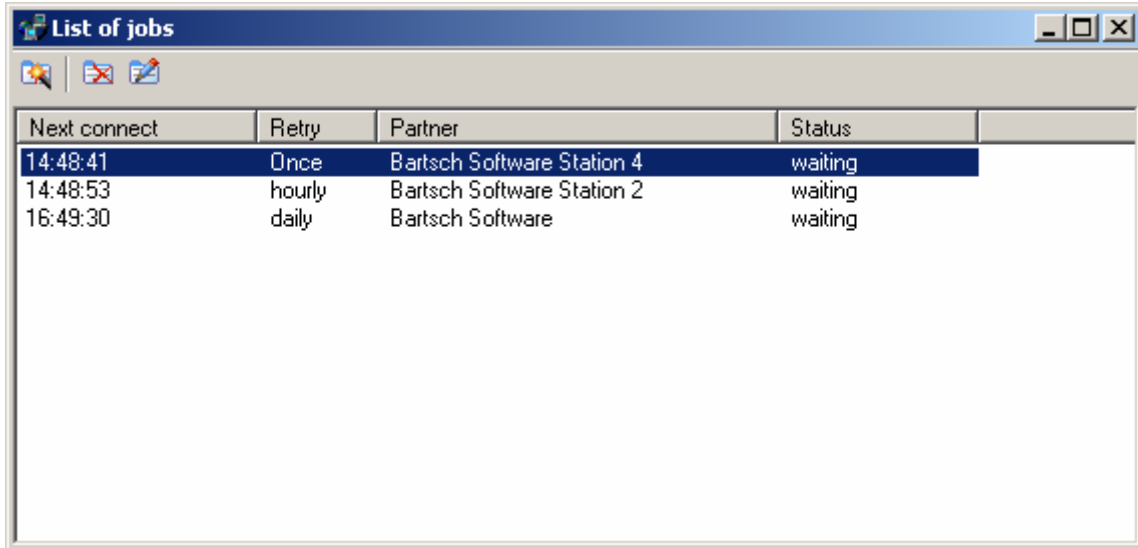
3.2.4 Delete Entry



Click on this Button to delete the blue marked entry.

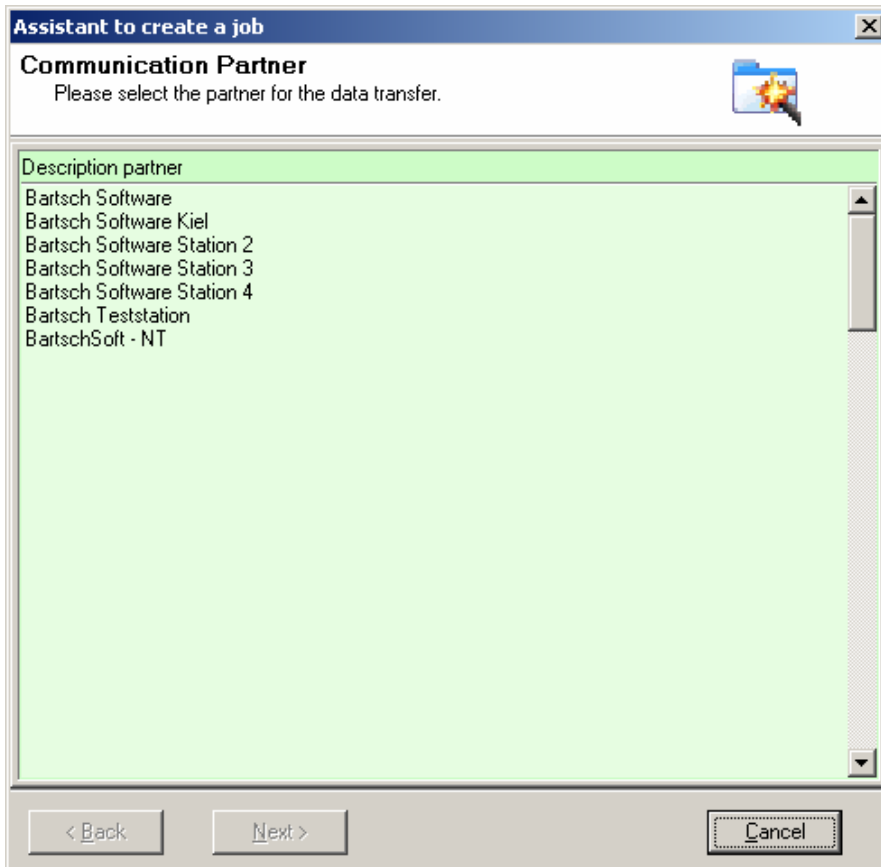
3.3 Jobs

Click on  to open the job list screen and create or edit sending jobs.



Next connect	Retry	Partner	Status
14:48:41	Once	Bartsch Software Station 4	waiting
14:48:53	hourly	Bartsch Software Station 2	waiting
16:49:30	daily	Bartsch Software	waiting

3.3.1 New Job



Assistant to create a job

Communication Partner
Please select the partner for the data transfer.

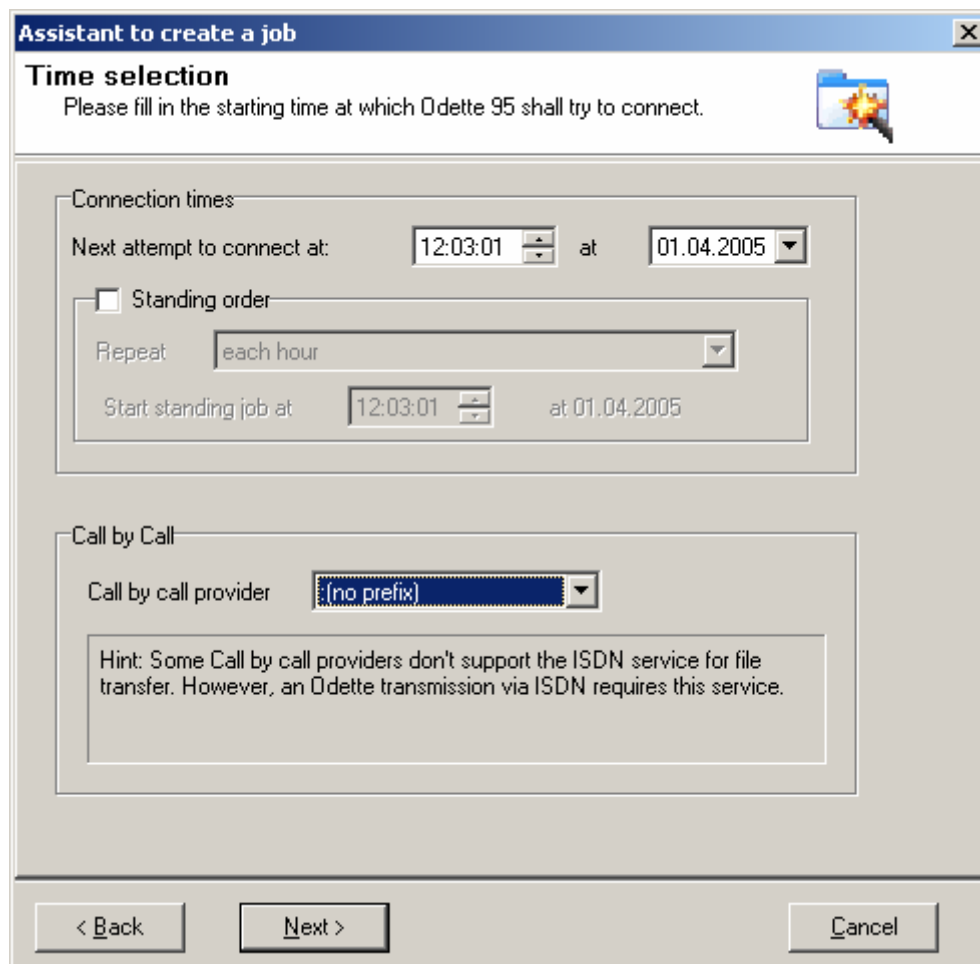
Description partner

- Bartsch Software
- Bartsch Software Kiel
- Bartsch Software Station 2
- Bartsch Software Station 3
- Bartsch Software Station 4
- Bartsch Teststation
- BartschSoft - NT

< Back Next > Cancel

Click on „New Job“. Select the desired partner by double clicking on the name in the Address List window.

Enter the settings for the time frame in which you want to establish a connection (Send Time). Enter time and date for the transmission start time. Default is the current time. Even if the chosen time lies in the past when finishing the entries the job will be sent.

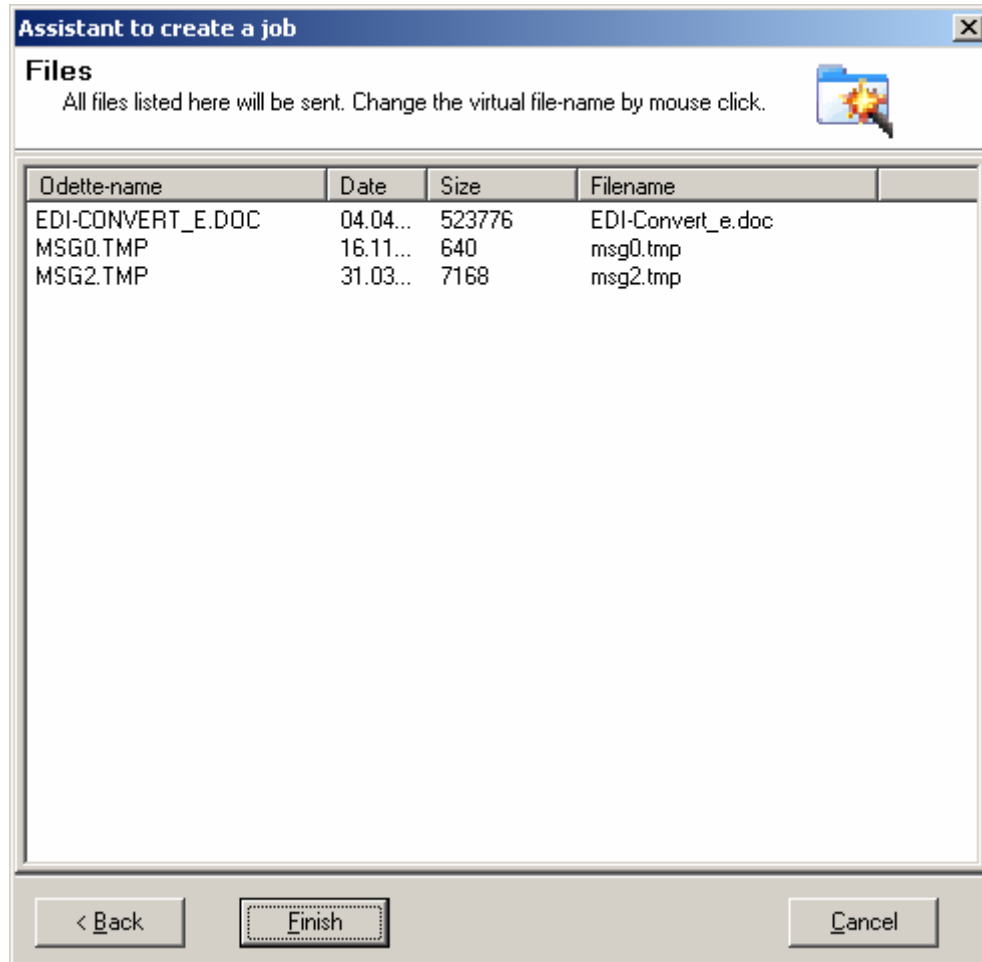
A screenshot of a Windows-style dialog box titled "Assistant to create a job". The dialog has a blue title bar with a close button (X) in the top right corner. Below the title bar, the text "Time selection" is displayed in bold, followed by the instruction "Please fill in the starting time at which Odette 95 shall try to connect." and a small folder icon with a starburst. The main area of the dialog is divided into two sections. The first section, "Connection times", contains a "Next attempt to connect at:" label, a time input field showing "12:03:01", an "at" label, and a date dropdown menu showing "01.04.2005". Below this is a checkbox labeled "Standing order" which is currently unchecked. Underneath the checkbox is a "Repeat" dropdown menu set to "each hour" and a "Start standing job at:" label with a time input field showing "12:03:01" and a date dropdown menu showing "at 01.04.2005". The second section, "Call by Call", contains a "Call by call provider" dropdown menu currently set to "(no prefix)". Below this is a text box containing a hint: "Hint: Some Call by call providers don't support the ISDN service for file transfer. However, an Odette transmission via ISDN requires this service." At the bottom of the dialog, there are three buttons: "< Back", "Next >", and "Cancel".

If standing order is selected all files in the out-directory of the partner will be transmitted to the defined time and each time the entered repeat interval has been reached.

In **Call by Call – Provider** select the desired telephone provider. The default setting can be set in the main menu / file options.

The transfer of 1 megabyte of data requires approximately 2.5 minutes, so the average data transfer rate is 24 megabyte per hour. The transmission speed always depends on the slower partner. If the data on the opposite side goes through a network, the speed will most likely be substantially reduced. Data communication in the U.S.A. is slower than in Europe, because the ISDN network runs with 56 Kbit/s instead of 64 Kbit/s.

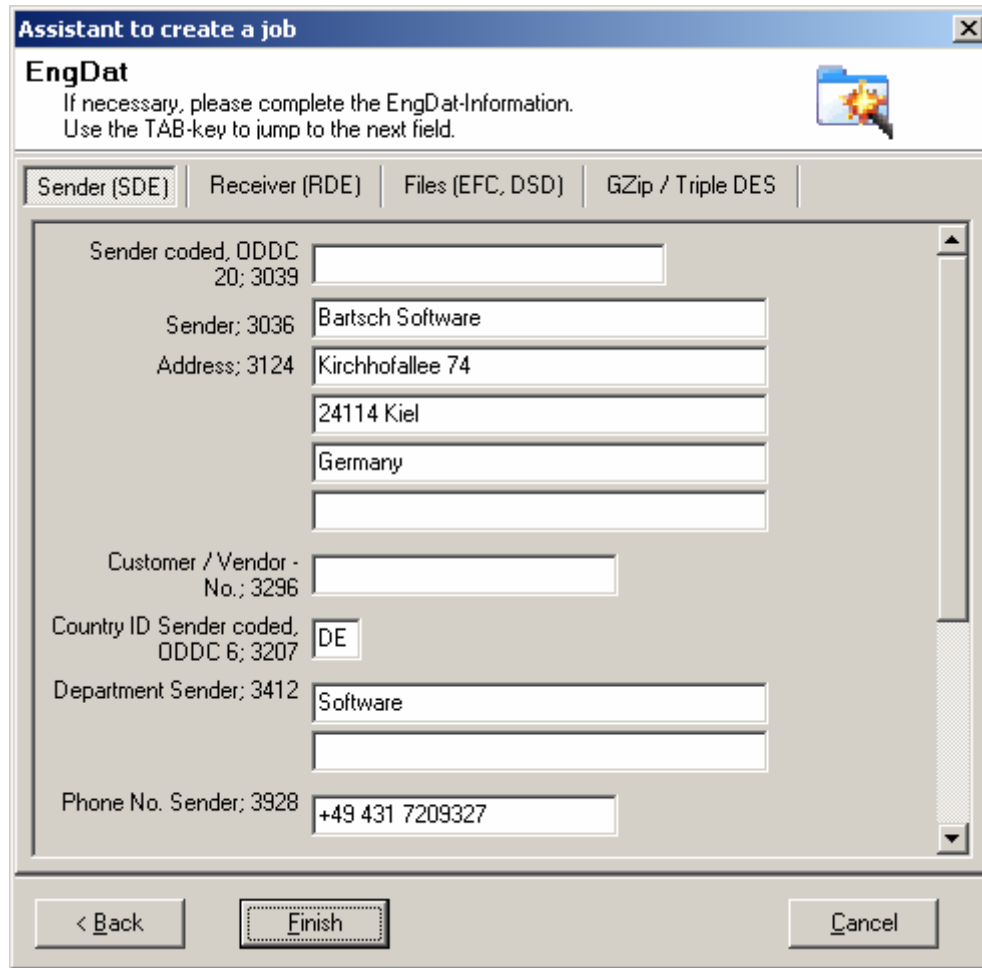
If “EngDat” and “EngPart” are deactivated, the window displays the contents of the outgoing directory (files only!).



Double-Click on a file to assign a different file name for transmission of the selected file. The original filename in the directory remains unaffected. The character set allowed in the file names is limited by the same rules as the Odette ID.

Clicking on the „Finish“-Button completes the job setup and the wizard ends. The job will be transferred at the given time. After a successful transfer the files are moved into the sub directory "backup". When the next job is initiated they will no longer be listed.

If EngDat is activated for the selected partner the form for EngDat information is now displayed.



Assistant to create a job

EngDat

If necessary, please complete the EngDat-Information.
Use the TAB-key to jump to the next field.

Sender (SDE) | Receiver (RDE) | Files (EFC, DSD) | GZip / Triple DES

Sender coded, ODDC 20; 3039

Sender; 3036

Address; 3124

Customer / Vendor - No.; 3296

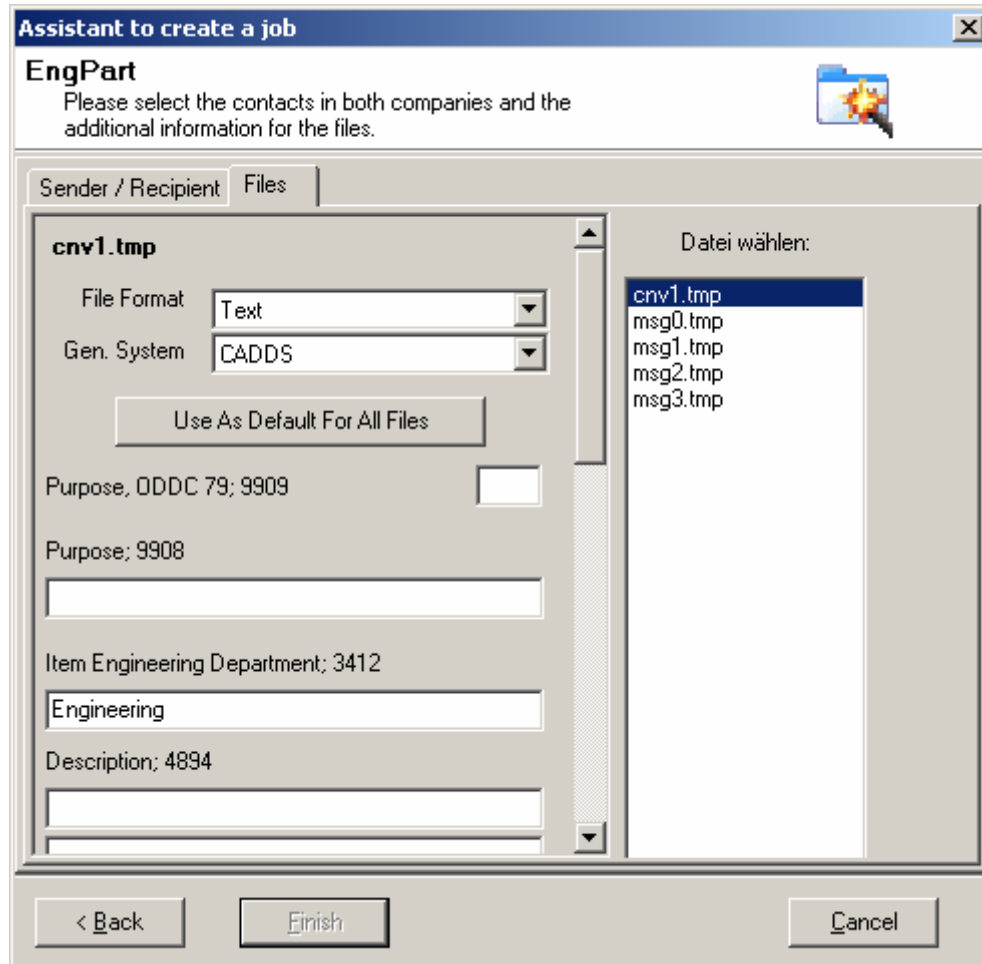
Country ID Sender coded, ODDC 6; 3207

Department Sender; 3412

Phone No. Sender; 3928

< Back Finish Cancel


If an ENGPART file exists for the selected partner and ENGPART is activated the ENGPART form is now displayed.



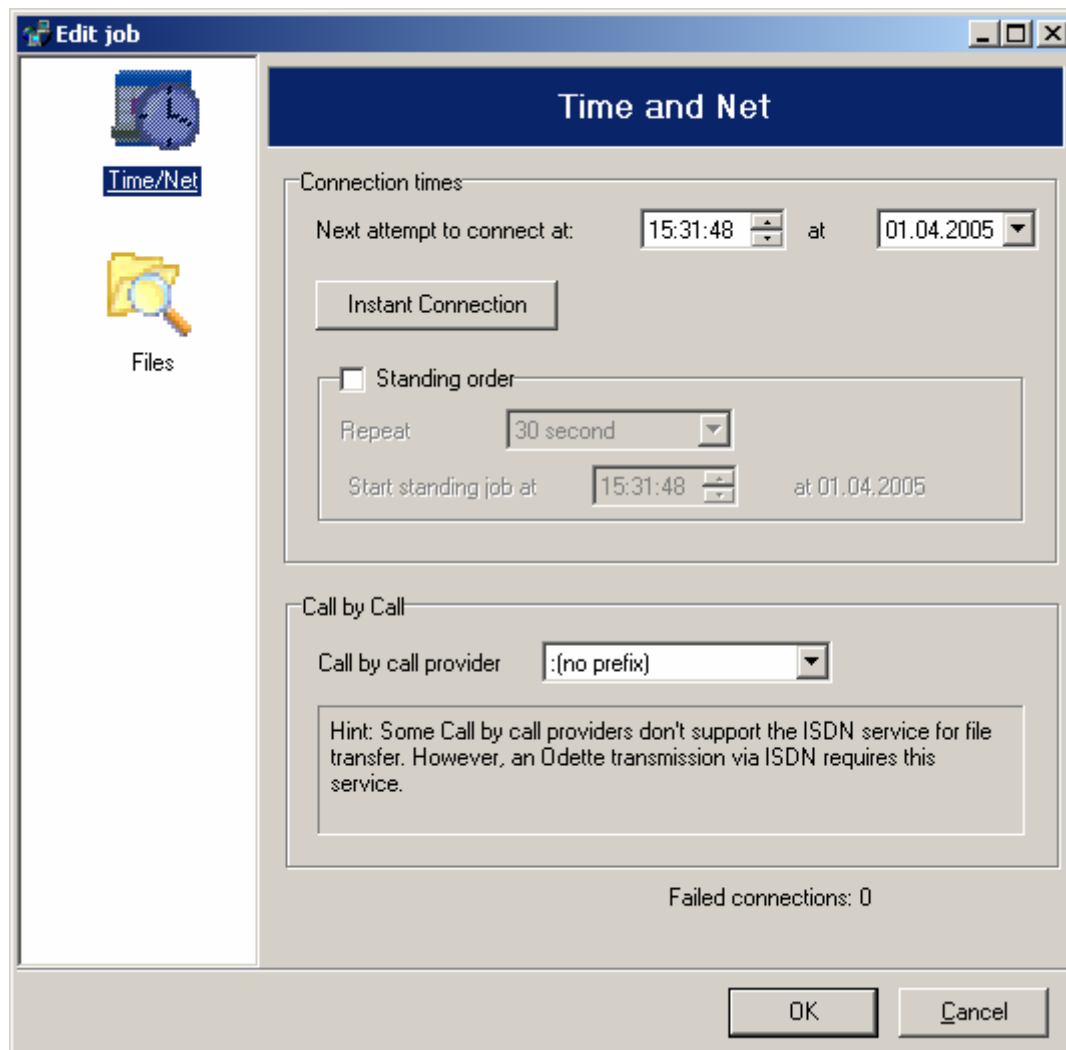
See chapter 4.7.1 for detailed information.

Note: A job can be created without selecting any files to transmit. This is useful if your partner provides files for you. Odette '95 MC will pick up these files when the next connection is established.

3.3.2 Change Job


In the main menu click on the Job List Button  to open the Job List. For each job the intended transmission time is displayed in the Job List. Please note that if all channels are occupied during the calling attempt, the job will start as soon as one comes available.

Click on the button “Change Job” to modify the time for the next call. The time for the call can be determined or set to “Immediately”. The number of unsuccessful call attempts is also displayed. Change these settings the same way as described under Creating a new job.



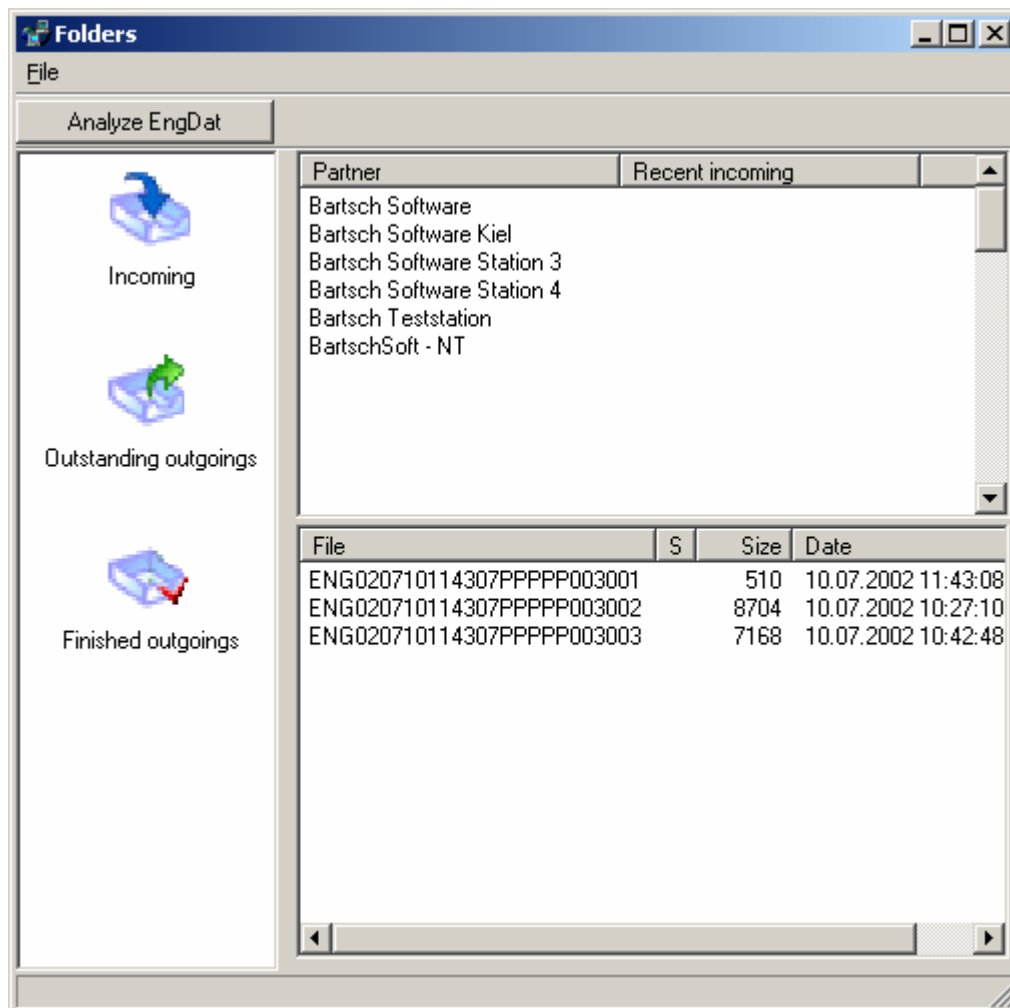
In Sheet „Files“ all files to be sent to this partner are displayed.


3.3.3 Delete Job

In the main menu click on the Job List Button  to open the Job List.

A job can be deleted by selecting the job followed by pressing the “Delete Job” button. You may delete a job at any time before the transmission starts, but not during transmission. A successfully completed job will be removed from the list automatically. If a partner calls your Odette '95 MC installation and your job list contains a sending job to this partner, this job will be executed as soon as the transmission from the partner has been completed. Afterwards the job will also be removed from the job list.

3.4 Directory Overview



 This window provides you with a quick overview of all non-empty input and output directories. For every partner company there is a different list of incoming and outgoing files. The outgoing directory also contains a sub-directory named “Backup”. Odette ‘95 MC automatically saves all successfully transmitted files into this sub-directory.

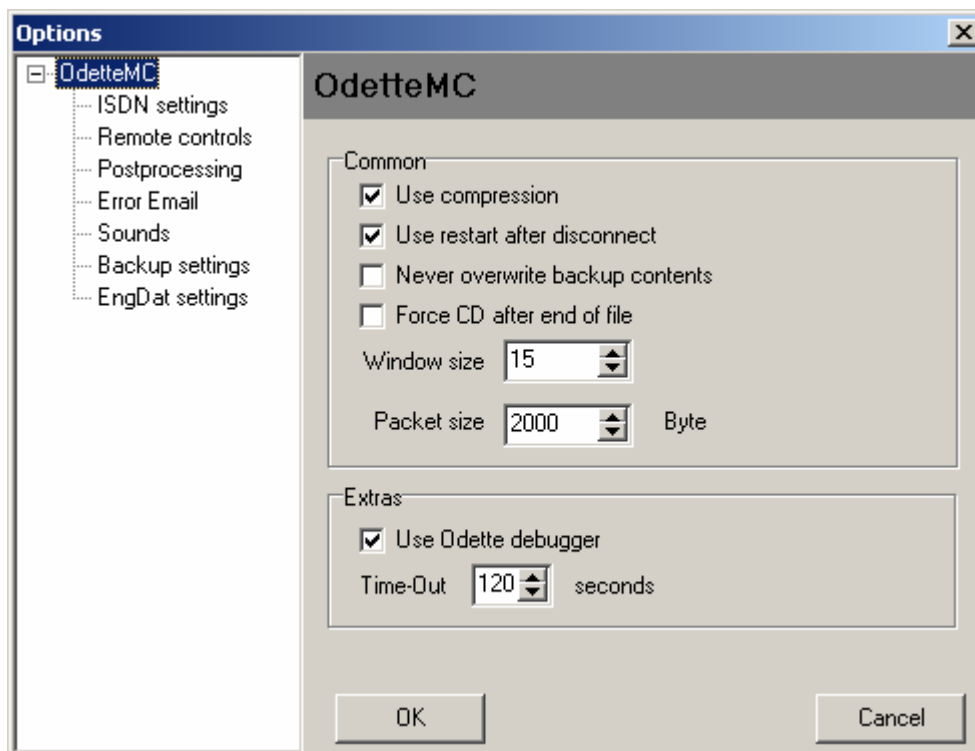
A button called “Evaluate EngDat” can be found in the “Received Files” tab. By pressing it, the EngDat Evaluation of the currently selected file is started. If there are no EngDat files listed, the button will be greyed out.

3.5 Program Options

The screen Odette–Options is used for setting internal parameters. The prefixes of up to 5 secondary (indirect) phone providers may be entered for the ISDN connectivity.

Choose an entry in the left frame to open and edit its content in the right frame.

3.5.1 Sheet General

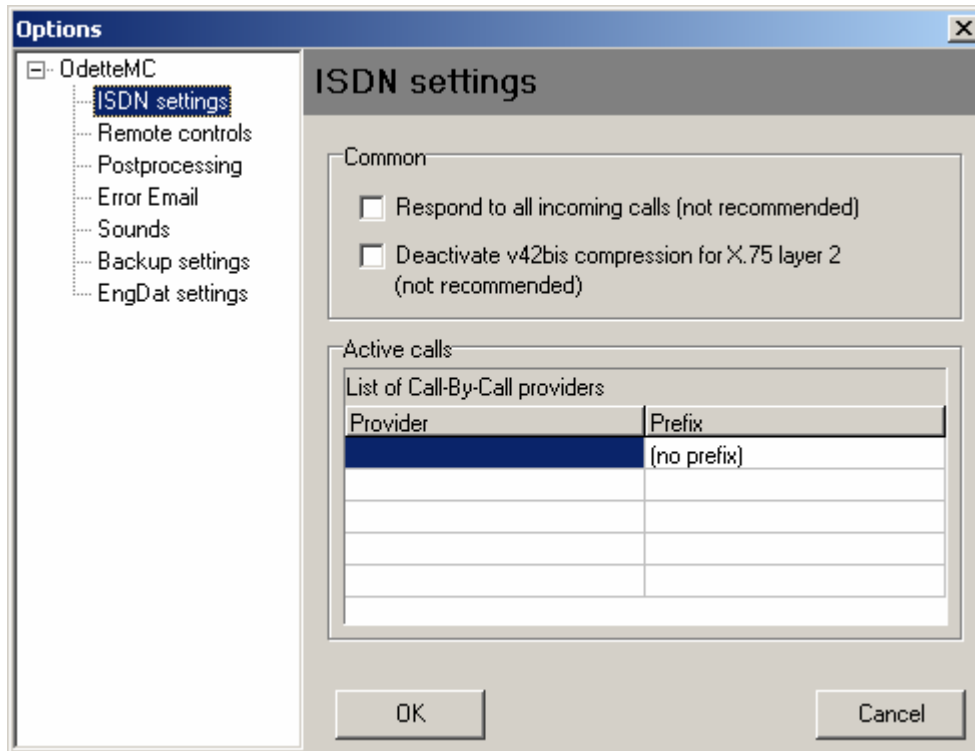


Option	Description
Standard	
<i>Use compression</i>	Data will be compressed during transmission. This option should remain deactivated with a computer lower than Pentium 90.
<i>Use restart</i>	If a running transmission has been interrupted, you can force the program to try to resume transmission from the point where it has stopped. Otherwise the file will be transmitted again from the beginning.
<i>Prohibit Overwriting Backup Directories</i>	After successful transmission all files will be moved to the backup directory. Generally existing files with same file name will be overwritten. This option adds a time stamp to each filename in the backup directory to prohibit overwriting it.
<i>Force CD after end of file</i>	If receiving multiple files from your partner fails activate this option (change direction). This setting does not comply with the Odette Standard but it is necessary if both Odette software are incompatible. Do not forget to disable this option when connecting to other partners.

Extras

Odette Communication Protocol	Detail protocol of transmissions in text files named DebugISDN1.txt, DebugISDN2.txt, DebugTCPIP1.txt, DebugTCPIP2.txt depending on installed Odette '95 MC version.
Find Received EngPart Files	This function is available only if you have the add-on module EngPart installed: EngPart and EngDat files received will be identified and displayed in the EngPart main window
Time-Out	The connection to a partner company will automatically be cut off if no data has been transmitted for a certain period of time. The Odette specifications recommend a timeout after 2 minutes. Since the Odette FTP has originally been conceived for DATEX-P as well, this value seems no longer appropriate for data communication via ISDN. If you get time out errors after reducing this value try to find the optimal setting by raising it again, step by step.

3.5.2 Sheet ISDN



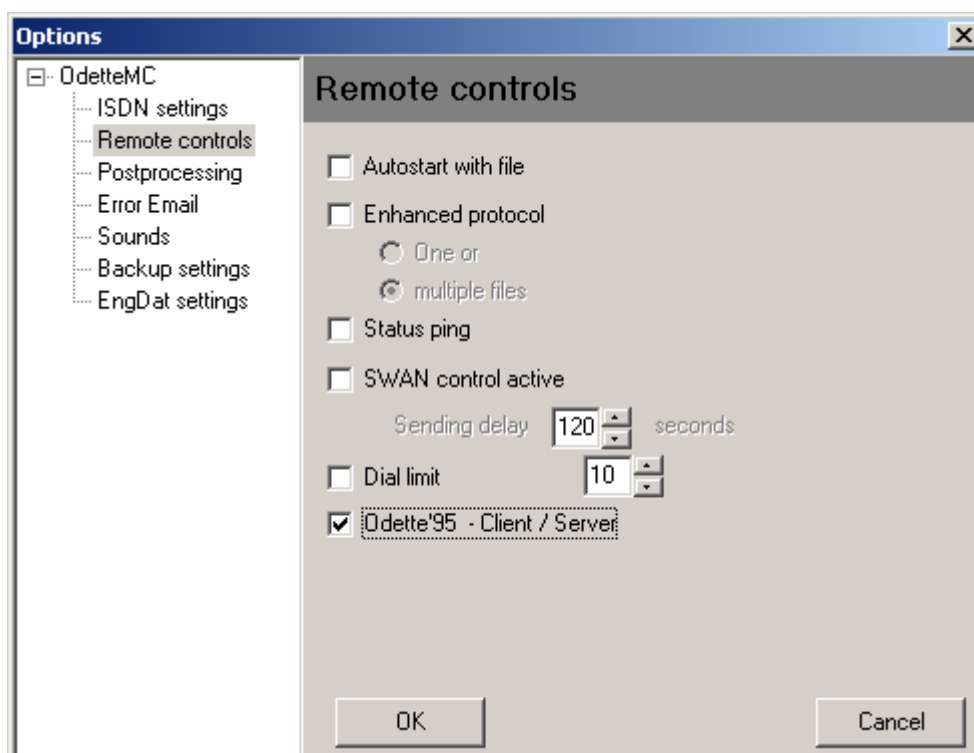
Option	Description
General	
Respond to all incoming calls (not recommended)	Using this option will lead to severe difficulties in most cases. Using any other data transmission software at this connection will become impossible. We strongly recommend consulting Bartsch Software before activating this option.
Use V42bis compression for X.75 Layer 2	ISDN only: The Odette protocol uses the protocol X.75 at level 2. Usage of v42bis compression is not specified. In general, protocol settings will be negotiated between both partner programs for correct connectivity without using this option. But if the partner program recommends v24bis compression, this option has to be activated. Please note that not all Capi drivers support this format. In some older systems the protocol has to be

activated in the device drivers.

Call by Call

The main phone provider is listed in the first row of the list and is used for all long-distance calls, unless another pre selection is made. 4 additional providers can be added to the pre selection. To avoid serious trouble in production testing data transmission with each provider is recommended.

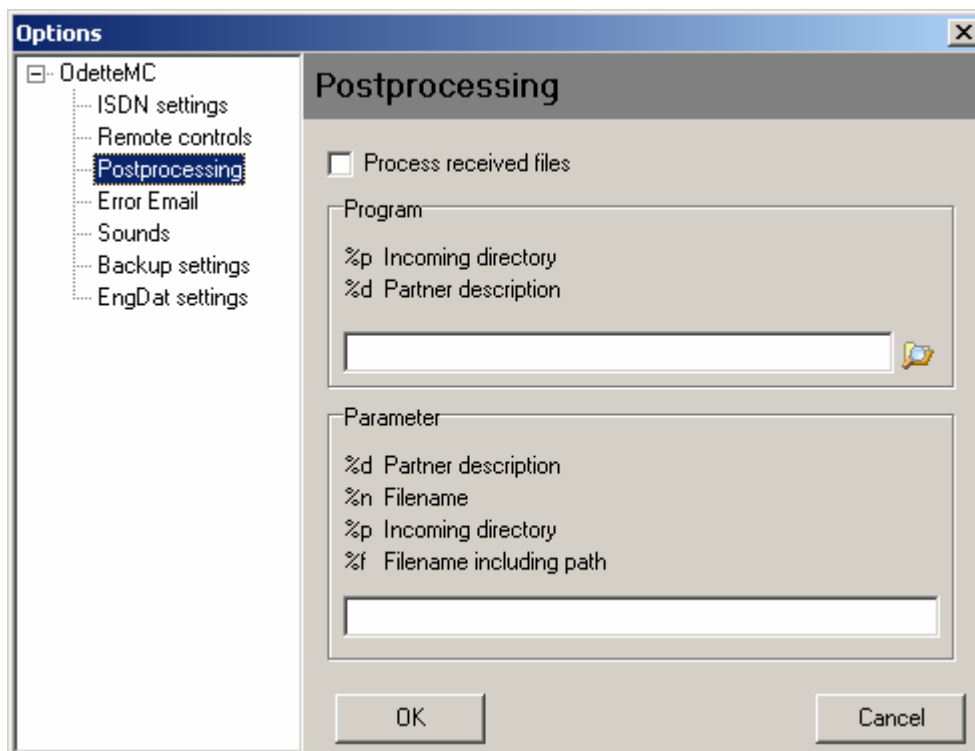
3.5.3 Sheet Remote Control



Option	Description
Autostart with file	If a file named "~start.job" (any contents) exists in an outgoing directory of one of your partners, Odette '95 MC will automatically create a transmission job and begin transmitting immediately. After successful transmission the file will be renamed to "~done.job" in the sub-directory "backup". With this feature Odette '95 MC can be remote controlled by any other software. (see appendix C for further details)
Enhanced protocol (single file)	A file named "Protokoll.txt" will be generated in the program directory. Following entries will be generated with each attempt to send or receive files: 1. Status, Date, Time 2. partner name 3. number of sent files; belonging to number of received EERPs 4. number of received files; belonging to number of sent EERPs 5. last error message 6. hyphen line.
Enhanced protocol (multiple files)	A sub-directory named "log" will be created in the outgoing directory. A log file with the same name will be created for each file in the outgoing directory. It contains the following information: 1. Status, 2. Date, time, partner name, 3. Odette file name, file name on hard disk, file size, if applicable restart position, 4. Last error message. These protocol files can be used to check if the data has been transmitted successfully.

<i>Status Ping</i>	Two files are created to remotely monitor the system. The file "ping.txt" contains the internal state of the software. The file "status.txt" contains the actual contents of the main window of Odette '95 MC.
<i>Swan control active</i>	The Swan module of Odette '95 MC will be activated (not part of standard version). Because Swan only creates jobs for single files a delay in time can be entered to collect several files in one sending job. During operation this option should be left unchanged.
<i>Dial Limit</i>	Odette '95 MC continuously dials until the connection has been established. With this function the number of attempts can be limited. The sending job will be removed when the set limit is reached.
<i>Odette '95 MC Client/Server</i>	With this option the add-on module Client/Server module of Odette '95 MC will be activated (not part of standard software version). This option has to be activated only once. If deactivated during operations all requests from the client stations will be ignored.

3.5.4 Sheet Postprocessing



Option	Description
<i>Post-process incoming files</i>	<p>If activated, the left field is used for a command to be called and the right field for parameters passed to the command. Variables can be set as follows:</p> <ul style="list-style-type: none"> • %d = Incoming directory where the received files is stored • %p = Partner description from address administration • %n = Filename of received file on hard disk • %f = Filename including path

For safety reasons filenames can only be used in the parameter block. Thus a direct call is not supported.

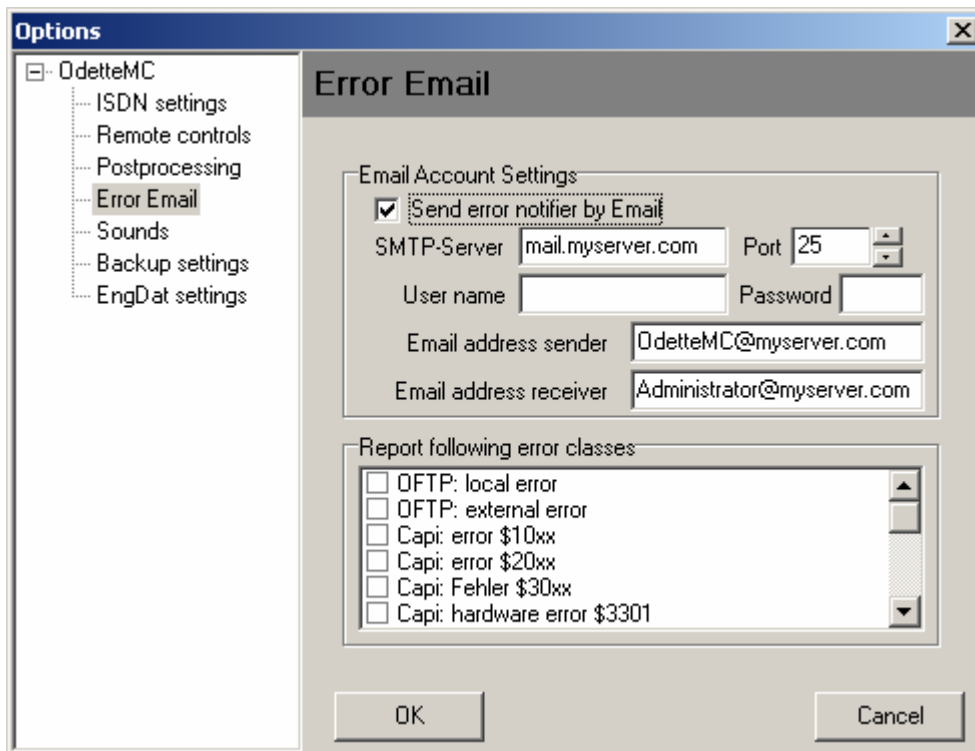
Example:

Command: %d\cmd\mytask.bat

Parameter: %p %f

The batch file mytask.bat in the directory cmd will be executed if found in the incoming directory set-up for the individual partners. Path parameters like %1 can be used within the batch file.

3.5.5 Sheet Error Email



Options

- OdetteMC
 - ISDN settings
 - Remote controls
 - Postprocessing
 - Error Email**
 - Sounds
 - Backup settings
 - EngDat settings

Error Email

Email Account Settings

Send error notifier by Email

SMTP-Server: mail.myserver.com Port: 25

User name: Password:

Email address sender: OdetteMC@myserver.com

Email address receiver: Administrator@myserver.com

Report following error classes

- OFTP: local error
- OFTP: external error
- Capi: error \$10xx
- Capi: error \$20xx
- Capi: Fehler \$30xx
- Capi: hardware error \$3301

OK Cancel

Enter a Username and Password if the Mail-Server needs these settings only.

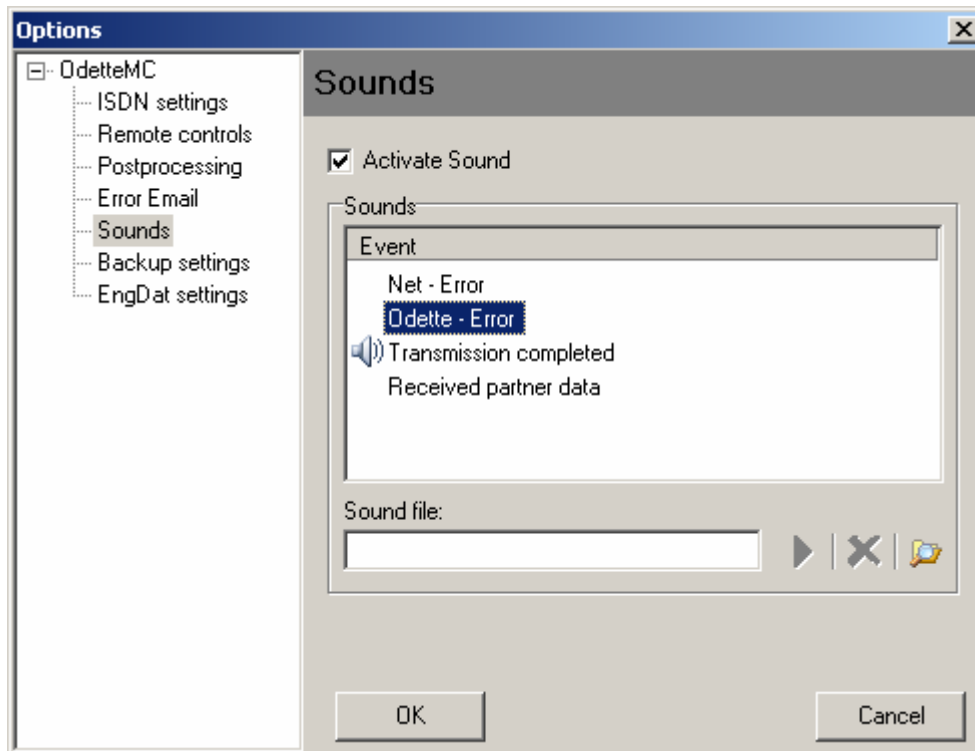
Enable and Disable Email Error Notification by clicking on the checkbox without losing any entries made on the sheet. This is recommended in case of testing connection to a new partner.

Possible transfer errors are linked to error classes.

Special errors can be hide from error check e.g. ISDN Error Class \$349x („Member occupied“, „Member not answering“). These errors are possible at any time and do not mean serious problems for transfer.

3.5.6 Sheet Sounds

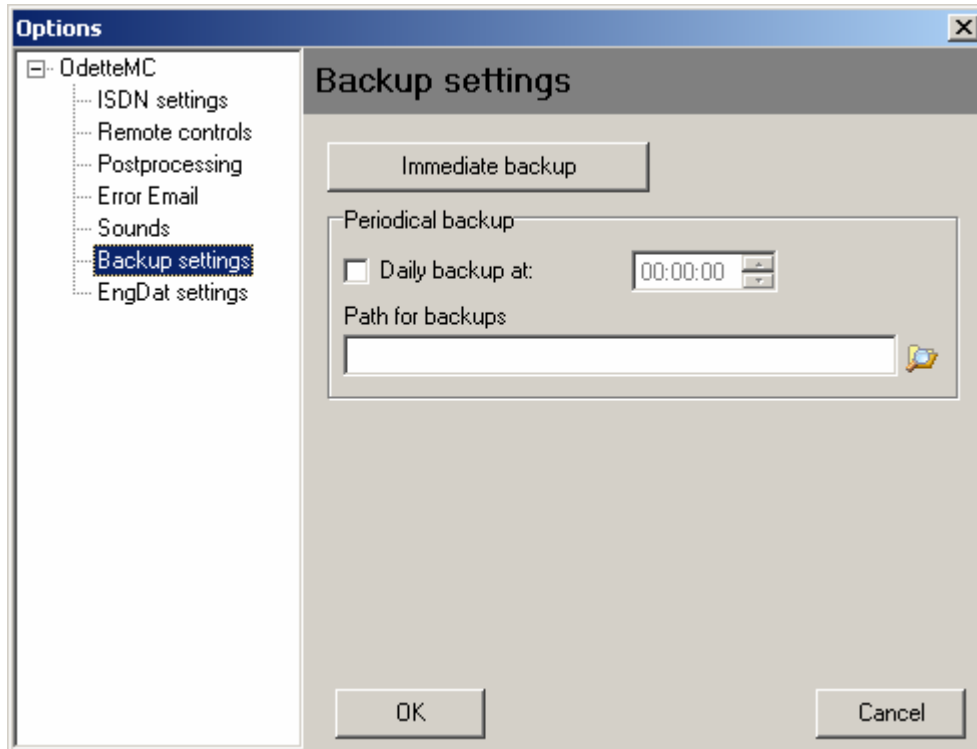
The various events during the data transmission can be supported by an acoustic background (WAV files). This is useful if the data-communication system is not constantly observed and incoming data has to be noticed by the user immediately. The sound module can either be deactivated completely or individual events can remain without sound.



Event	Description
Connection successful	Both sides have exchanged their Odette identification and the transmission starts.
Connection failed	The call to a partner was not successful. In general the reason is either the line is engaged or the partner is currently transmitting data to someone else.
ISDN-Error	The connection has been severed during transmission. The problem might be a serious hardware failure or an interruption by the phone exchange.
Odette-Error	An internal error in the Odette protocol has occurred. The reason might be a wrong Odette identification or wrong password. If such an error occurs during the data transmission the transmitted data is seriously damaged and the X.25 protocol is unable to correct the error.
Transmission completed	Data transmission has been successfully completed.
Received Partner Data	When using the EngPart module this is the notification that a partner company has just sent "EngPart" information.

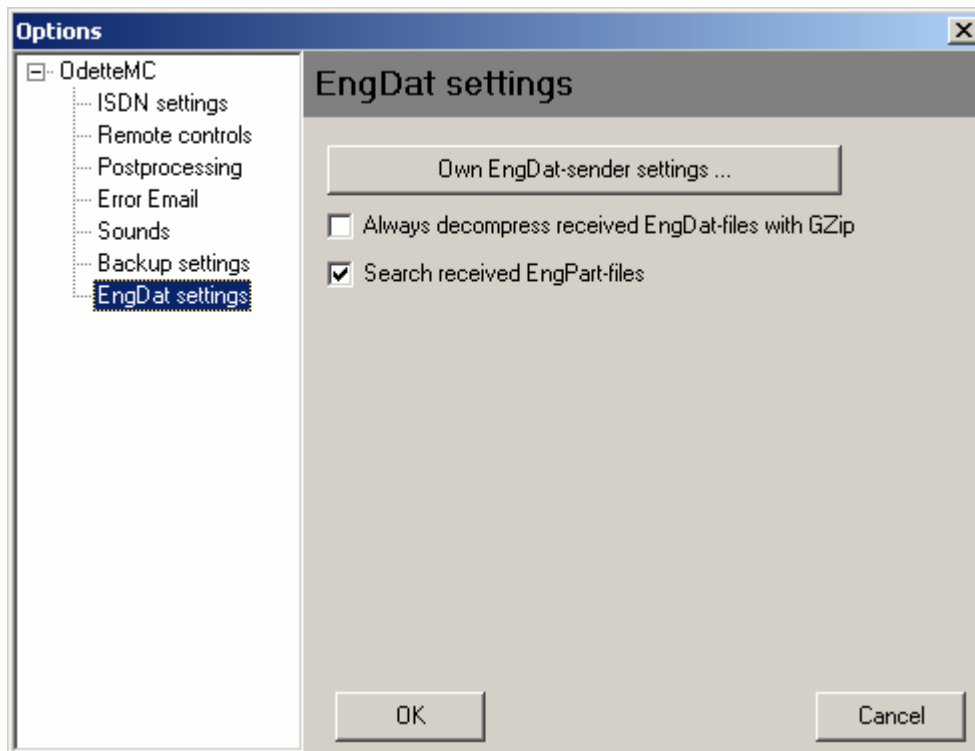
3.5.7 Sheet Backup

Create backups of essential system files like address and protocol files.



Option	Description
Immediately	Starts at once and backups are stored in the given directory.
Daily backup	Enter if and when a daily backup is running automatically.

3.5.8 Sheet EngDat



Option	Description
Own EngDat-sender settings...	Once made, settings will be taken over into new EngDat description in the address administration automatically. Saves time by avoiding entries for own data for any new entry.
Always decompress received EngDat-files with GZip	The VDA recommends to pack all files in EngDat format with GZip. All packed files will be marked in the EngDat abstract. If not marked Odette '95 MC will not unpack the files. By activating this option all received files are checked and unpacked if needed.
Search received EngPart-files	(only used with Add-On Module EngPart) EngPart files are sent in EngDat format. Activated all files received are notified to the Add-On Module EngPart. The Module checks for EngPart information and if found files will be shown in the EngPart main window.


3.6 Using the ENGDAT-Module

3.6.1 Using the ENGDAT-Module (Send)



Select your partner in Address Administration, move to the Sheet „EngDat“ and select Option „Active“ in register „Receiver“. With this setting, all files are sent in EngDat format to this partner.

3.6.2 Using the ENGDAT-Module (Receive)

The ENGDAT Evaluation can be started from the window „Directories“ , if the “In”-directory of the corresponding partner company contains an ENGDAT file. Choose an ENGDAT file and press “Evaluate ENGDAT”.

Note: Some software programs name the files according to general ENGDAT agreements, without creating an ENGDAT abstract file. Evaluation takes place only if the first of several files was generated in accordance with the ENGDAT regulations!

The function of the Evaluation window corresponds to those of a normal word processor. The ENGDAT information can be stored and printed. Since the ENGDAT abstract also contains the original names of the files, these can be renamed here again.

After restoring the original file names and upgrading the ENGDAT information to a standard text format it should now be easy to pass on the files to the correct recipient within your own company and process them according to the intended purpose.

4 Add-on Module ENGPART

4.1 General Information

The ENGPART file (subject to the German VDA recommendation 4951) represents a substantial result of the efforts to describe content and format of an automated transfer of information.

The file is used to set-up and update partner relations largely without verbal or written exchange of information. Phone conversations or fax messages are normally only required for setting up the initial connection.

Following information is sent to the partner company by transmitting an ENGPART file:

- all departments and people participating in the exchange of data
- the parameters relevant for the data transmission
- contacts and recipients of the partner company

The ENGPART file is – in accordance with the recommendation mentioned above – a readable text file that can be inspected with a standard text editor.

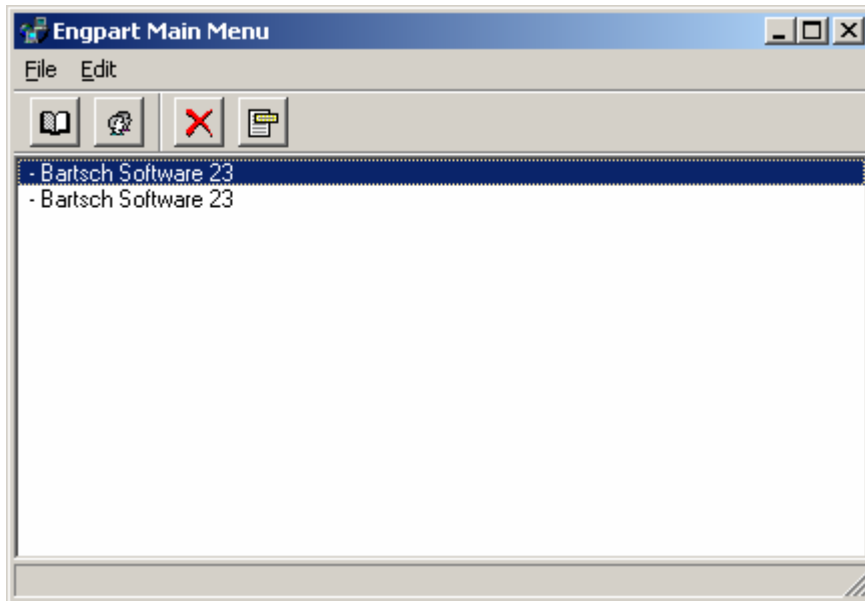
The ENGPART module automatically prepares an ENGPART file based on the available information. If desired, the module transmits the file to a selected partner. It is also used to manage the information received from your partners and the information that has been freely entered into the database. Partner entries as well as own entries can be viewed and changed at any time.

The ENGPART module for Odette '95 MC simplifies the data exchange of ENGDAT substantially. The required information is set up as soon as both partners have exchanged their ENGPART files. The ENGPART module also assists you in sorting and analysing received files, provided they have been sent in ENGDAT or ENGPART format.

4.2 The ENGPART Main Menu

Open the add-on module ENGPART by pressing the ENGPART button found in the tool bar of the Odette '95 MC Main Window.

The add-on module ENGPART starts up with its main menu.



In the lower section of the window, received ENGDAT files are listed according to the partner description entered in the address database.





If an ENGPART file is detected the entry starts with "ENGPART".

Note: The ENGPART Main Menu window opens automatically when ENGDAT or ENGPART files have been received.

In Odette '95 MC under "Options" the function "Find received EngPart Files" must be enabled. Otherwise the window will not display any files.

4.3 Functions of the ENGPART Main Menu

Table of Functions

	<i>Edit base data:</i> Modify or add data concerning your own company
	<i>Edit partner data:</i> After setting the type of administration, partner information can be view and if necessary modified.
	<i>Delete entry:</i> Remove selected entries from the list. The file itself will not be deleted. To evaluate ENGPART files at a later time use "Edit Partner Data".
	<i>Evaluate Entry:</i> The program evaluates the selected file. Depending upon the file format this is done in different ways: ENGDAT Evaluation of Odette '95 MC is started for ENGDAT file. ENGPART information is saved for ENGPART file and is accessible via "Edit Partner Data".

All buttons may also be accessed via the "Edit" Menu.

More options are available on the "File" Menu as follows:

About Engpart

Obtaining general information about the version and author of the program

Close

Close the "Engpart Main" window

Refresh List

All list entries without referring data file are removed from the list.

Note: The function "Refresh List" only removes files that are no longer available from the list, but does not add any new entries. Therefore, it cannot be used to cancel the process "Delete entry" ! Make sure to delete items of the list only if you are convinced that they have already been evaluated.

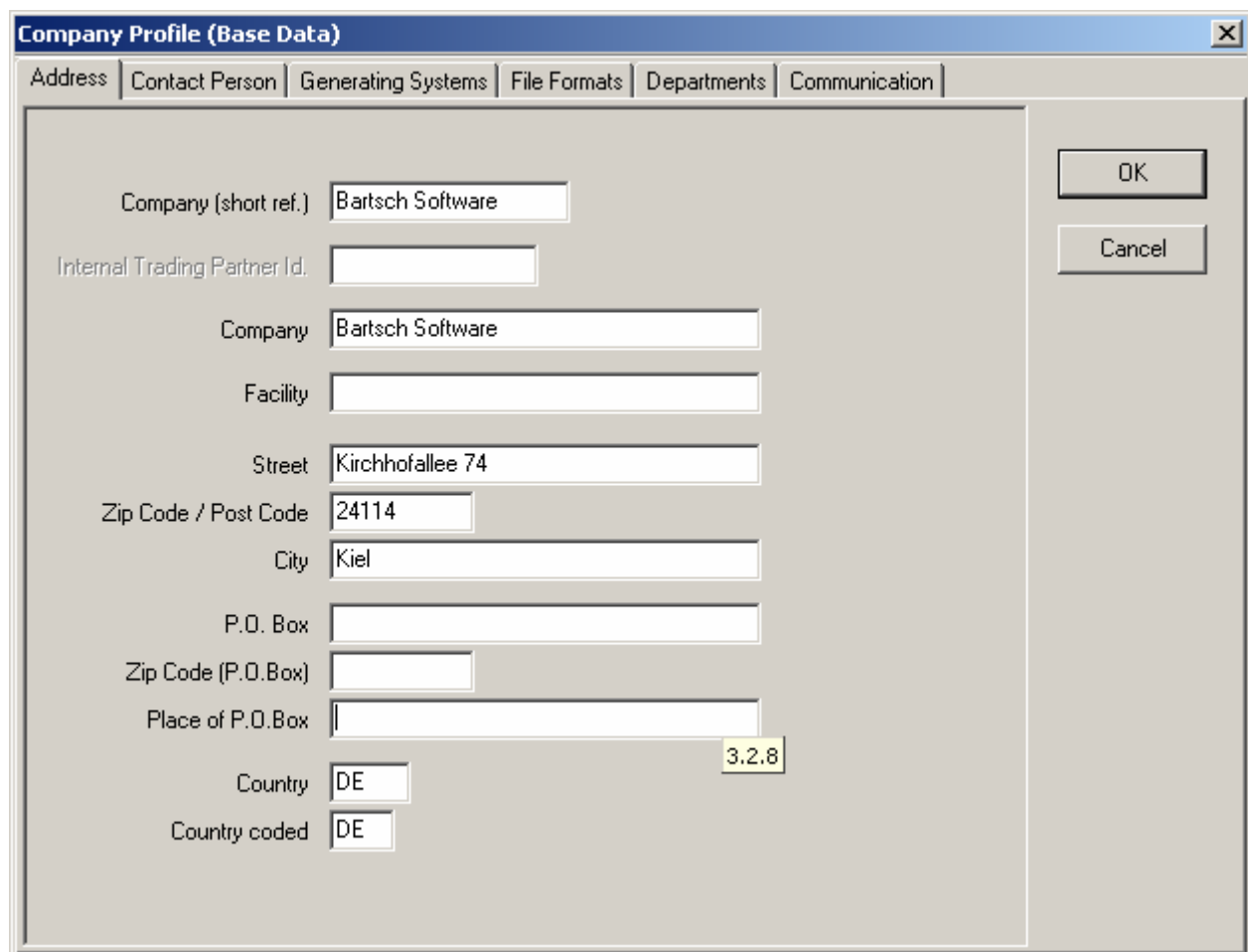
4.4 Before sending an ENGPART file

After the initial installation the add-on module ENGPART provides only the technical requirements for transmitting ENGPART files. The information which is to be transmitted to a partner company needs to be entered first.

Following steps are required to enter the information:



Open the window “Edit Base Data” by clicking the appropriate symbol.



Field	Value
Company (short ref.)	Bartsch Software
Internal Trading Partner Id.	
Company	Bartsch Software
Facility	
Street	Kirchhofallee 74
Zip Code / Post Code	24114
City	Kiel
P.O. Box	
Zip Code (P.O.Box)	
Place of P.O.Box	
Country	DE
Country coded	DE

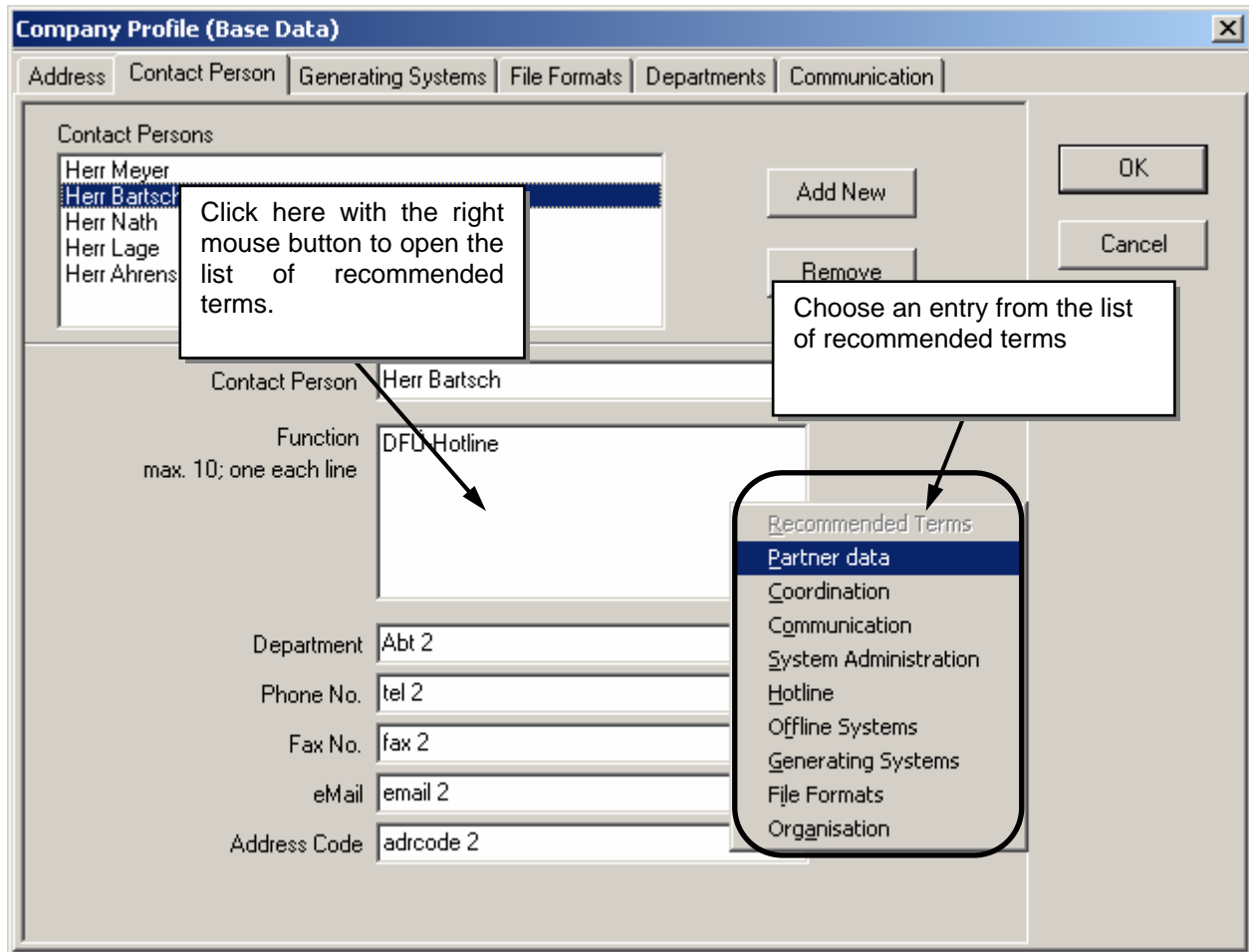
The first input page “Address” and the following pages are intended for entering details of your own company. You can move through the individual pages by clicking the header of the required page.

In order to comply with the VDA recommendation there are fields that need to be filled in before the first time transmission. When moving the mouse pointer over a field, a popup flag shows the associated EngPart code and the letter “M” if the field is mandatory.

For detailed information regarding „Mandatory Fields“ see chapter **7 Appendix A: ENGPART (VDA Recommendation 4951) Mandatory Fields .**

Press “OK” to save your changes and return to the main menu. Press “Cancel” to return without saving changes.

Example:



Note:

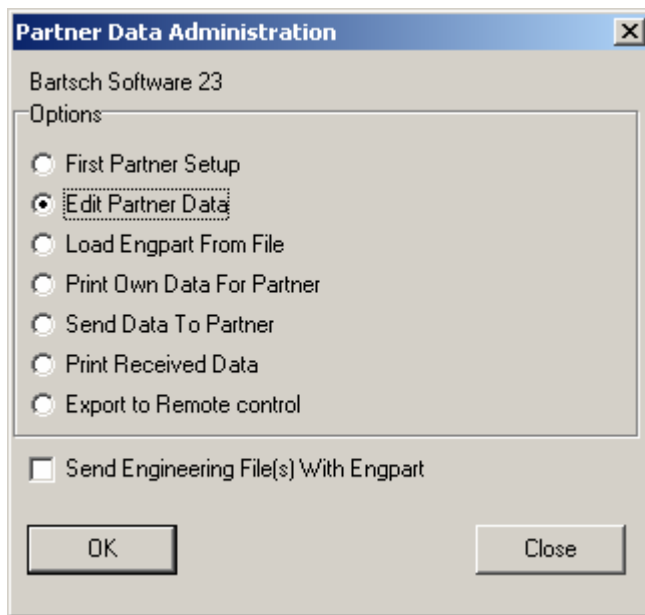
The window above can be used if the details of your own company need to be changed at a later time (change of telephone number, name of employees etc). Please ensure that an update containing the modifications is transmitted to all ENGPART partners, who might be affected by them.

4.5 First time transmission

Prior to the first ENGPART connection both partners must send their data to the opposite partner. If your partner has already sent data there are fewer entries to be filled in manually.



After filling in all mandatory fields for your company, select the button “Edit Partner Data” to open the “Partner Data Administration”. Choose the desired company from the list of your Odette partners.



At the top the name of the selected partner company is shown. If you have **not received ENGPART data** from your partner yet, select option “First Partner Setup” and click “OK”.

In the window “Partner Company Profile” enter the information for the selected partner similar to entering your own details. For detailed information regarding „Mandatory Fields“ see chapter **7 Appendix A: ENGPART (VDA Recommendation 4951) Mandatory Fields** .

Enter the address and the name of your contact person. This information is needed only for the first transmission and will be replaced later by the information send to you by your partner.

The free 5 character identifier is part of the ENGDAT file name and is usually given to you by the partner company or agreed upon with you. By all means this field must be filled in.

Partner Company Profile [X]

Address | Contact Person | Generating Systems | File Formats | Departments | Own Preferences and EngDat

Partner I.D.

Compression (Mode)

Encryption (Mode)

Encryption (Key)

Hint: The integrated Triple-DES (DES3) requires 3 lines with 16 hexadecimal numbers each.

Forwarding

No Forwarding

Virtual Filename (5 characters)

Address in EngDat-Header (UNB0014) (14 characters)

Both (5 characters)

Code Page

UNOA

UNOB

UNOC

5 character File I.D.

OK

Cancel

If you **have already received ENGPART data** from your partner, select the option “Edit Partner Data” and select the page “Own Preferences And ENGDAT”. Information transmitted to you by your partner should not be modified unless it is absolutely necessary, since your partner is responsible for the correctness.

When the fields under “First Partner Setup” or “Edit Partner Data” have been filled in, return to the previous window by clicking the “OK” button.

You are now able to transmit your first ENGPART file to your partner. Select option “Send Data To Partner” to transfer the information via data transmission or select “Print Own Data For Partner” instead and send the information in printed form.

4.6 Evaluating received data

In addition to the usual information displayed in the Odette '95 MC main windows the add-on module ENGPART checks incoming files whether any of them are ENGPART or ENGDAT files. In this case the ENGPART Main window opens automatically if it is not already open. In the list you will now find the name of the company that has just transmitted ENGDAT / ENGPART data to you.

If the partner company has transmitted an ENGPART file, there will be a special reference to it at the beginning of the line. Otherwise files in ENGDAT standard have been transmitted.



Select one entry of the list and click the button "Evaluate Entry".

For ENGDAT files the familiar evaluation routine of Odette '95 MC is called. See chapter **4.7 Sending and receiving engineering files** for details.

For ENGPART files the data transmitted will be read and stored by the ENGPART module immediately. As soon as the message "ENGPART file has been read" is shown, the information is accessible via "Partner Data Administration"



Select within "Partner Data Administration" the option "Edit Partner Data" to view the information.

If you have already sent an ENGPART file to the partner company you are now able to send engineering files in ENGDAT standard to this company.

If you want to view a received ENGPART file after evaluating it, you may also select the option "Print received data" in the menu "Partner Data Administration". The program will provide you with a printout of the received ENGPART file.

Addendum: If the partner company cannot send its data in ENGPART standard you have to enter relevant information, e.g. final recipients in the departments, manually. When done you can use the ENGPART module to transmit data in ENGDAT standard to the partner company.

4.7 Sending and receiving engineering files

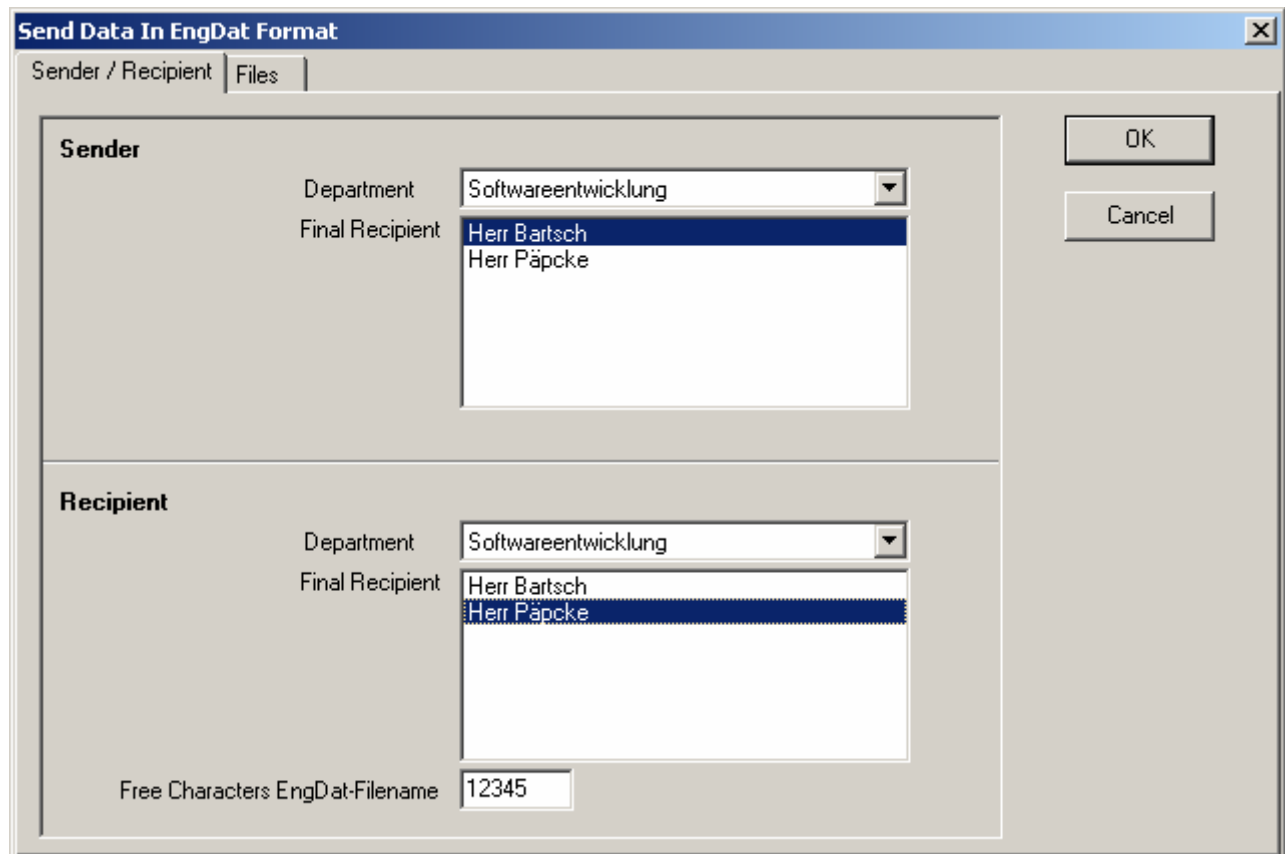
All preceding explanations merely served to assist in establishing the first ENGPART connection.

4.7.1 Sending engineering files

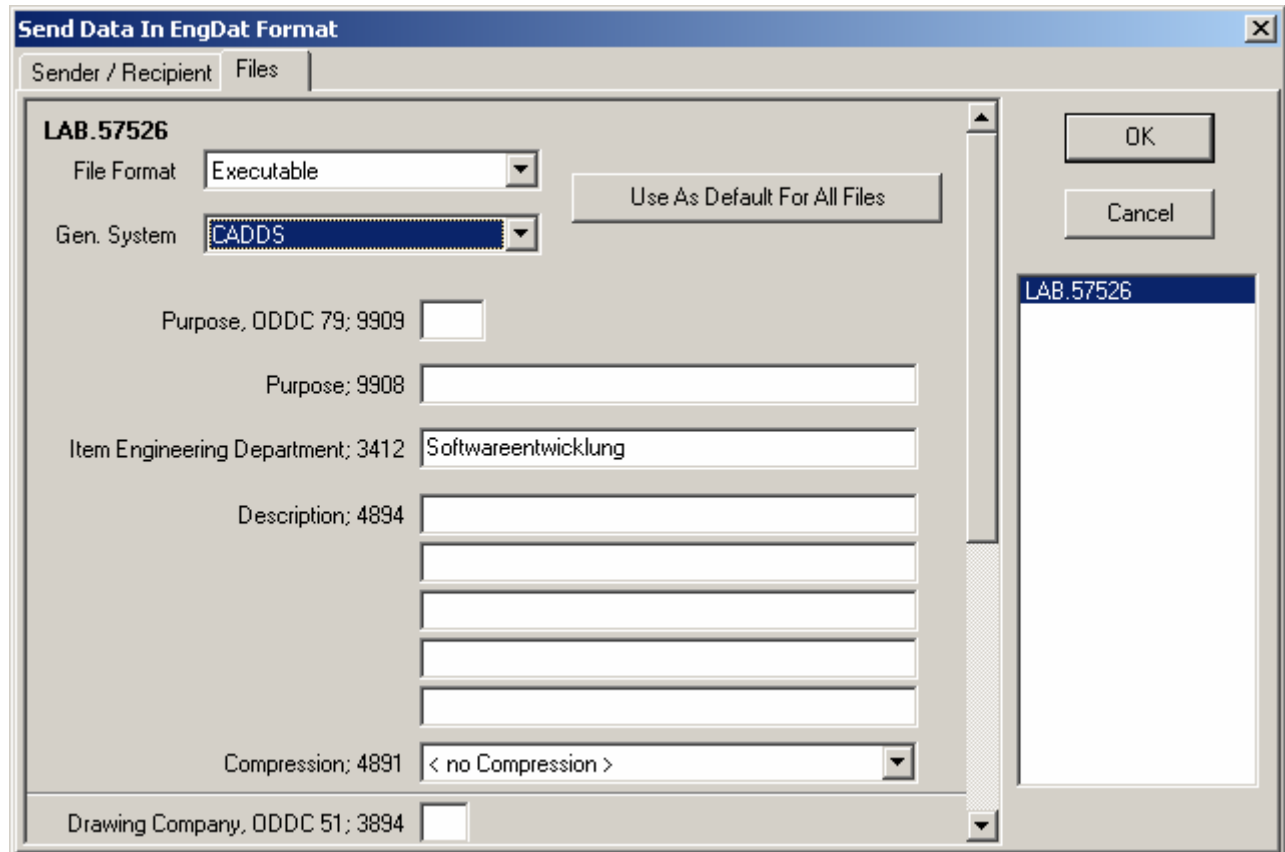
Own and other information entered in the ENGPART module can be used to create new sending jobs to a large extent automatically. For this the appropriate option in the Partner Administration (ENGPART) has to be activated once.

Just check the box "Send engineering file(s) with Engpart" at the bottom of the menu "Partner Data Administration" and leave the menu by clicking the "Close" button.

Now select the option "New Job" in the Job List and select the appropriate partner. The following window appears:

The image shows a Windows-style dialog box titled "Send Data In EngDat Format". It has a blue title bar with a close button (X) in the top right corner. Below the title bar, there are two tabs: "Sender / Recipient" (selected) and "Files". The dialog is divided into two main sections: "Sender" and "Recipient". Each section contains a "Department" dropdown menu set to "Softwareentwicklung" and a "Final Recipient" list box containing "Herr Bartsch" and "Herr Pöpcke", with "Herr Pöpcke" selected. At the bottom left, there is a text field labeled "Free Characters: EngDat-Filename" containing the value "12345". On the right side of the dialog, there are two buttons: "OK" and "Cancel".

First select the correct sender. Choose the department and the final recipient within. Repeat the same steps for the Recipient. When done move to the second page named "Files".



On the right side of the window all files are listed for which you can enter ENGDAT information. Select the correct file format and generating system. Additionally you can enter intended purpose and a description. The default setting for the item engineering department is the sender department selected before. This may be modified if requested. In the lower section of the window (not visible in the screenshot above) a drawing description can be added.

If you are done with the input for one file, you can use the input as default setting for all other files by clicking the corresponding button. From now on you must edit only the fields which differ for each file. Close the window by clicking "OK" and proceed in creating the sending job as usual.

4.7.2 Receiving engineering files

Each entry in the ENGPART main window list without the addition ENGPART represents an ENGDAT file with engineering data. The evaluation is started the same way as with ENGPART files by clicking "Evaluate Entry". Thus the evaluation routines of Odette '95 MC are started and the window "Evaluation EngDat Header" opens.

4.8 What to do if....

...I want to evaluate an ENGPART file which is not listed in the ENGPART main window?

In „Partner Data Administration“ select the option „Load EngPart from file“. Select the desired file in the opening window. The ENGPART module will now treat this file like one listed in the ENGPART main window and will try to gain partner data from it.

Attention: If the selected file is not an ENGPART file, the add-on module ENGPART cannot draw any usable data from it. In this case the module interprets all unusable data as missing, meaning that partner data that has already been available is deleted. Therefore only use this menu option when you have made sure the selected file is the correct one.

...the partner company cannot generate an ENGPART file?

In this case you have to enter all information manually, which otherwise would have been sent as an ENGPART file. The “First Partner Setup” is not sufficient in this case. Instead of the First partner setup select the following option “Edit Partner Data” in the same menu. There you must complete all information, which the partner company has transmitted to you in other form, regarding contact persons, generating systems etc.

...the partner company is to receive the ENGPART file in written form?

In “Partner Data Administration” select option „Print Own Data For Partner“. The ENGPART module creates the complete ENGPART file and send it to your printer.

...I want to edit my company data?

...I want to edit the data of a partner company?

When you have completed the first input, you can of course still edit your base data or partner data as desired. Simply select the corresponding option in the ENGPART main window.

Note: Generally data may also be deleted here as desired. But remember of Mandatory fields of the VDA recommendation. For details see chapter **7 Appendix A: ENGPART (VDA Recommendation 4951) Mandatory Fields** .

5 Add-on Module Client/ Server

5.1 Installation

The "Client/Server" feature is activated under "File – Options". (not part of standard version). Refer to section "3.5.3 Program Options".

5.1.1 Server

Following directories must be shared across the network: (Refer to the Windows documentation for further details about "sharing a drive or folder" or contact your system administrator).

- Incoming and outgoing directories : read and write permission
- ".\Programs\Odette95" : read permission
- ".\Programs\Odette95\cs" : read and write permission

5.1.2 Client

There are different possibilities to access the shared folders. One is to map drive letters to the server folders first, another is to access the folders with the server name directly (\\<Server>). A combination of both is possible as well. Refer to the examples below.

Afterwards, a new shortcut must be created containing the client executable "OdetteClient.exe" and the station parameter. A second, optional parameter can be added, if the drive letter assigned to the data directory is not the same as on the server.

Each workstation must have a unique parameter as station identifier (max 14 characters). Don't use spaces or any other special characters.

5.1.3 Examples

Example 1

Server	Installation directory	"C:\Program Files\Odette95"
	Data directory	"F:\oftp_data"
	Sharing	"C:\Program Files\Odette95" directory
	Sharing	"F:\\" drive with share name "F-Drive"
Client	Mapping	Letter "F:\\" mapped to "\\<Server>\F-Drive"
	Shortcut 1	"\\<Server>\Odette95\OdetteClient.exe" STA114

Example 2

Server	Installation directory	"C:\Program Files\Odette95"
	Data directory	"C:\oftp_data"
	Sharing	"C:\\" drive with share name "C-Drive"
Client	Mapping	Letter "F:\\" mapped to "\\<Server>\C-Drive"
	Shortcut 1	"F:\Program Files\Odette95\OdetteClient.exe" STA114 "F"

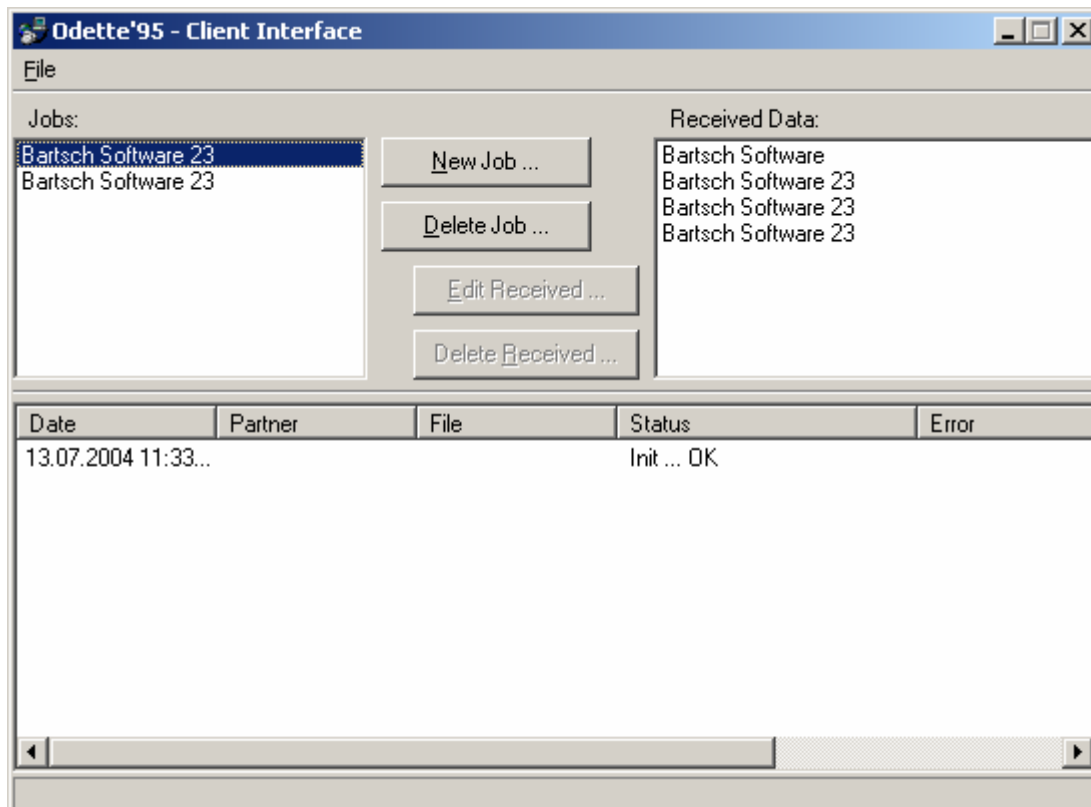
Example 3

Server	Installation directory	"C:\Program Files\Odette95"
	Data directory	"D:\oftp_data"
	Sharing	"C:\Program Files\Odette95" directory
	Sharing	"D:\oftp_data" directory
Client	Shortcut	"\\<Server>\Odette95\OdetteClient.exe" STA114 "\\<Server>"

5.2 Operation

The handling of the Odette '95 MC server remains unchanged. Please keep in mind that jobs created by clients should not be changed or deleted on the server. In comparison to jobs created directly at the server, client jobs always have a unique job number.

The Odette '95 MC client has 3 functions: Creation of sending jobs, process notification and notification of received data for the client. Clients only display messages relevant to themselves.



The “Jobs” field displays partner names associated with sending jobs that have been created at the client station. Jobs can be deleted by selecting them, followed by pressing the “**Delete Job**” button. It is not possible to delete jobs that are currently being processed. In this case only the name would be deleted from the list and the server would finish the transfer anyway. A successfully completed job will be deleted from the list automatically.

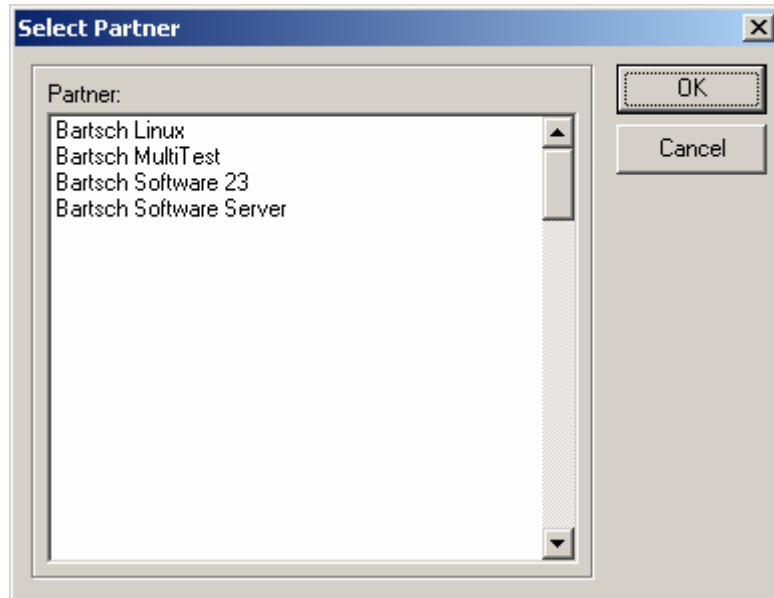
The “received data” field displays partner names associated with files that have been sent to the client station. The incoming files are listed in the EngDat-format and can be evaluated by pressing the button “**Edit Received...**”. Delete entries by pressing “**Delete Received...**”. The corresponding files will not be erased.

The lower list contains status notifications corresponding to jobs which were generated at this station. Notifications like successful transmissions and errors will be listed here.

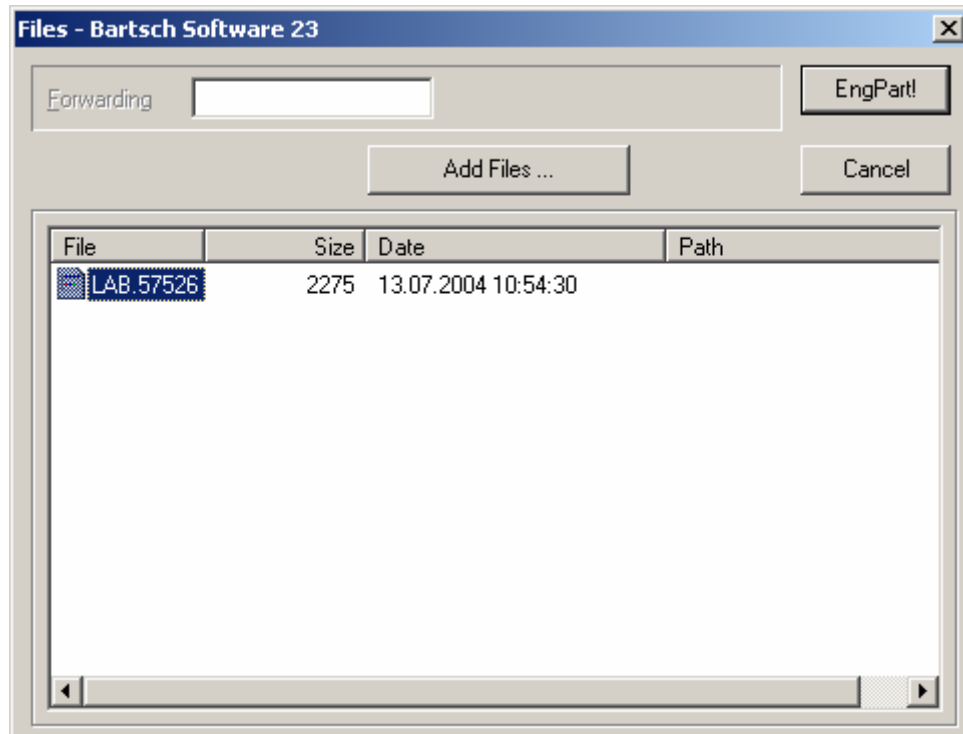
If the client is not permanently connected to the server, all messages will be stored on the server and delivered to the client at the next connection.

Sending Files

Press **“New Job ...”** to generate a new sending job. A list of all your stored partners on the server appears.



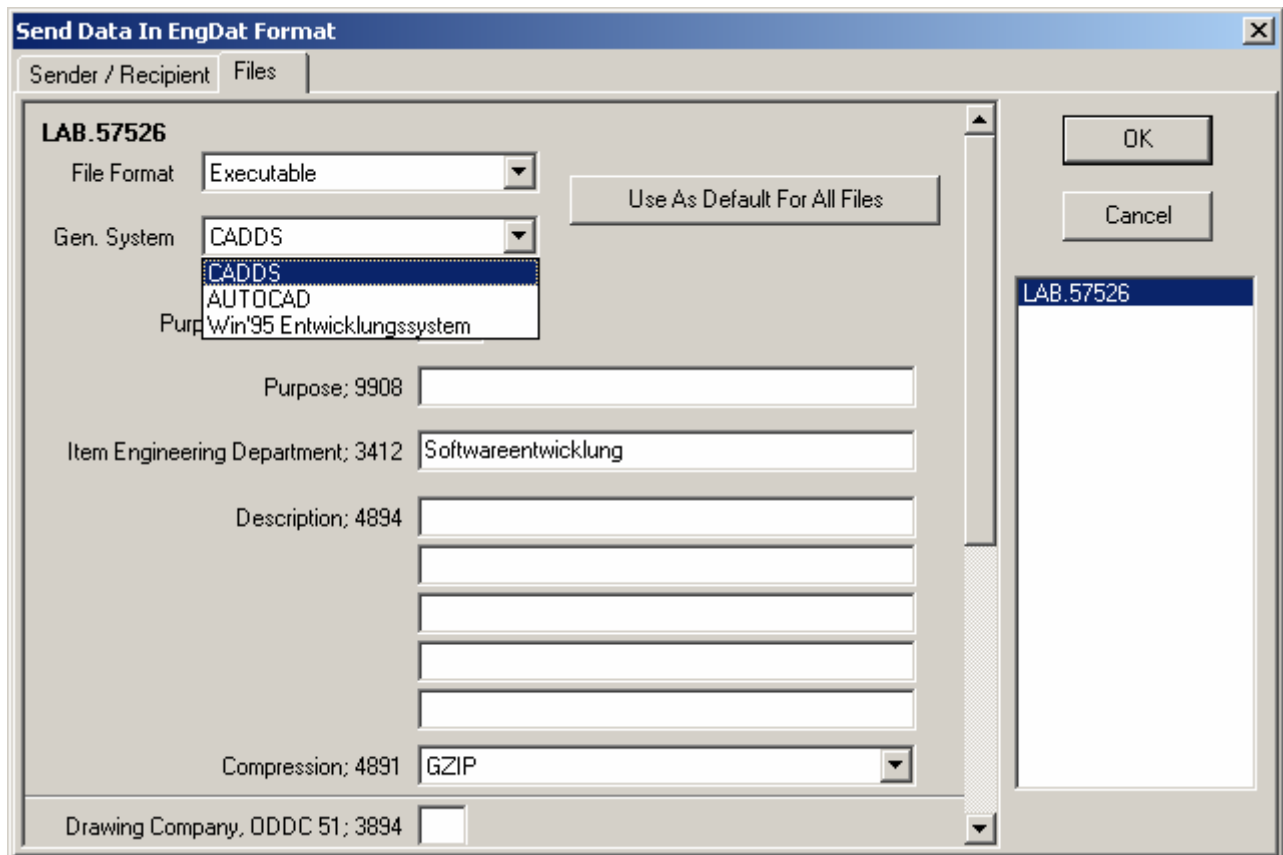
Select the desired partner and press the **“OK”** button to generate a new sending job. The contents of the corresponding directory for outgoing files will be shown.



Use the button **“Add Files ...”** to copy additional files into this directory. A **“sending job”** always contains all displayed files. Files which have been sent will be moved to the subdirectory **“backup”**. No files will be sent twice.

An optional forwarding address can be entered in the field **“Forwarding”**. The given text corresponds to the free definable characters of the EngDat-filename used in Odette ‘95 MC server’s address book and can be changed on request. This is only significant if files will be sent in EngDat format. Press the button **“Start!”** to transfer the job to the server. The job will be executed immediately.

If the partner is set up for EngPart, the transfer will not be started immediately. A window will be opened in which EngDat selections and parameter settings can be made prior to sending the job.



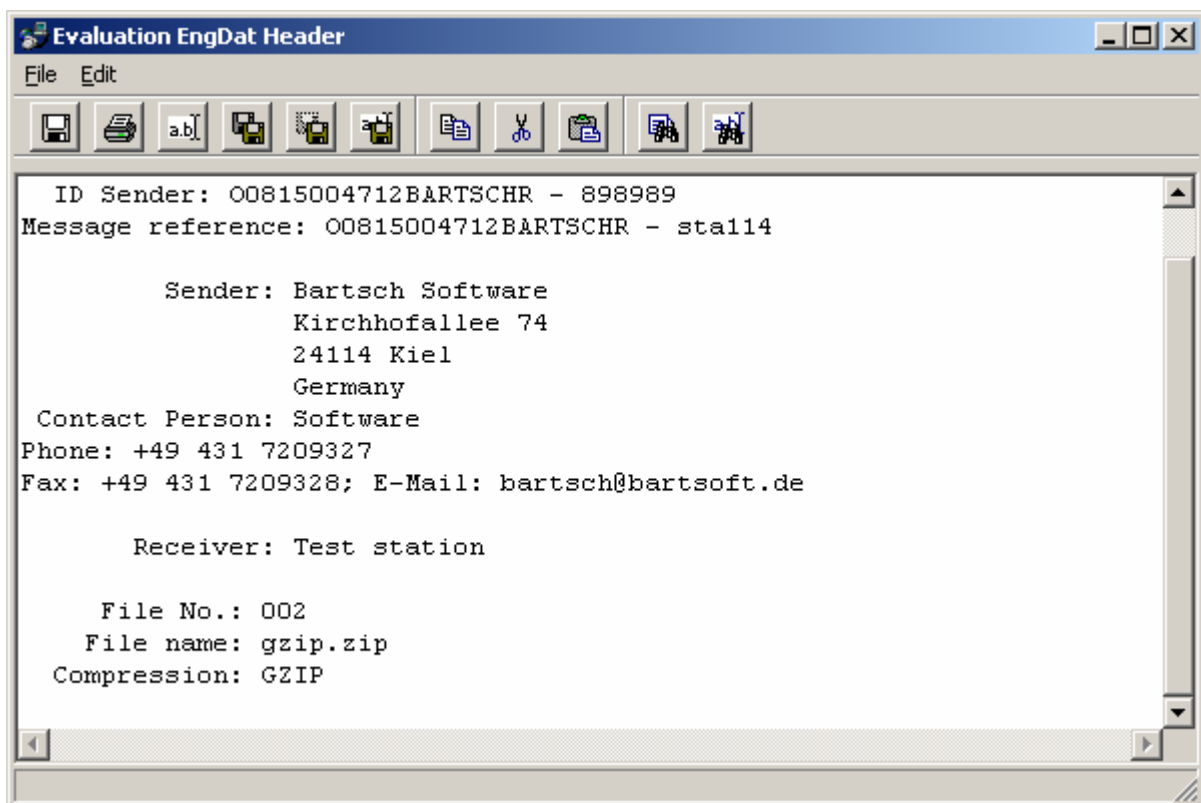
The input options are the same as available on the Odette ‘95 MC server. Press “OK” and the server will build an EngDat header file and start sending the job immediately.

Note: The sending format (Standard, EngDat or EngPart) cannot be selected on the Odette ‘95 MC client. The preferences set on the Odette ‘95 MC server are valid for all client stations. Please note that some information requested by the partner has to be entered on the client if a new sending job is generated.

5.2.1 Receiving data





After Odette '95 MC server has received files in EngDat format, the program will check whether the field "Forwarding Address" (defined in Edifact as field S0003-0014 in block UNB) is filled. In this case the data will be transferred to one Odette '95 MC client. The context of this field represents the name of the client station. If the station does not exist or no address has been specified the evaluation of the EngDat-message must be done at Odette '95 MC server.

After the transmission is finished the name of the partner will appear in the upper right list of the main screen. By pressing **[Edit received...]** or by double clicking the entry, following window opens:



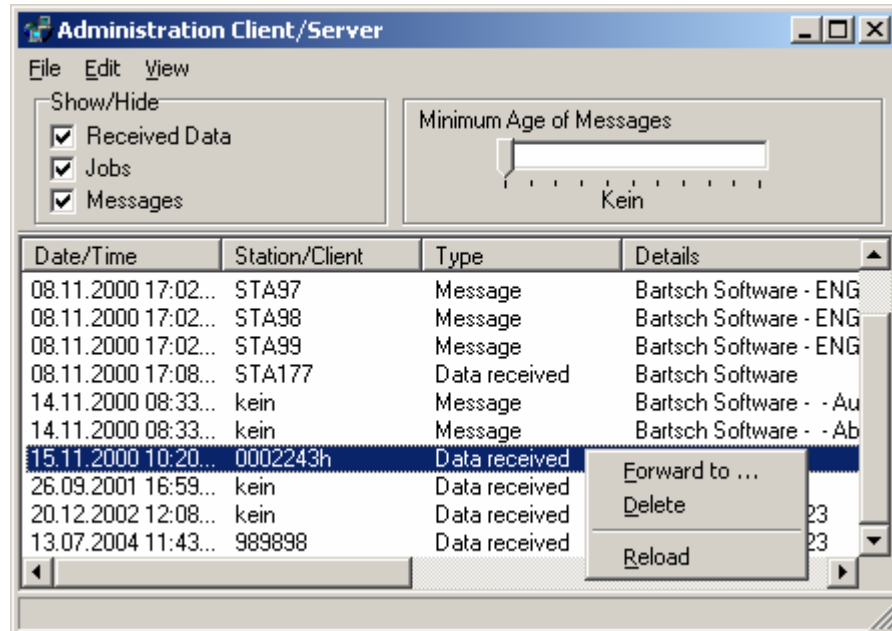
The contents of the EngDat header file can be edited here. Following functions are available:

Table of Functions

	Files in the incoming directory will be renamed back to their original names. The EngDat header files will not be renamed.
	The files will be copied into a selected directory.
	The files will be moved into a selected directory. After successful operation they will be removed from the directory for incoming files. As there is no further evaluation the entry will be deleted automatically from the list in the main screen.
	The files will be copied into a selected directory. The destination files will be renamed back to the original filenames referring to the EngDat header file.

5.3 Administration Client/Server

Select "View – Administration Client/Server" in the Odette '95 MC main menu to open the administration window.



Use the administration window to check for messages that could not be passed on to the client stations (client station not accessible or Client/Server interface not started). Individual messages can be selected and forwarded to different stations. The different filter and sorting (column headers) options allow viewing of unprocessed messages more efficiently.

Edit messages:

- Delete:** Marked messages will be deleted from the server. With next start of corresponding client they will not be displayed.
- Forward to:** Marked messages can be forwarded to a specific station. Only the new selected station will receive these messages.

6 Com-Secure (Automated Encryption)

Requirements:

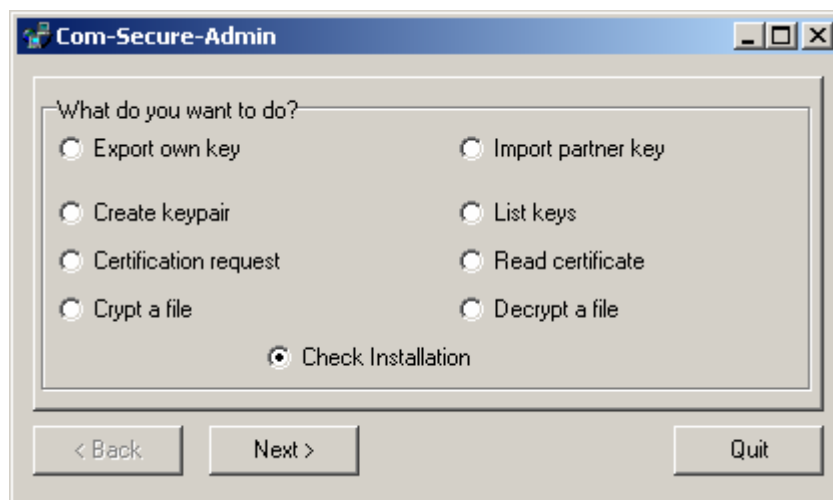
The program Com-Secure must be installed.

A „keypair“ (own private and public key) have been created.

Further details can be found in the user manual for Com-Secure !

Settings in Odette:

Choose the desired address in address administration and activate option „**Com-Secure**“.



Open the ComSecure Administration in the Odette '95 MC main menu and the menu item "File".

The key of the partner will be assigned by the address administration automatically and has to be taken over from this menu to the ComSecure key administration.

Note: If there is a requirement for encrypted and unencrypted data interchange with the same partner, an additional entry in the address database can be created with the same entries apart from the encryption settings and the entry in the description field.

Based on the setting for encryption Odette '95 MC executes the encryption automatically. The process will be shown in a separate window that will close automatically when done. If an error occurs the window will remain open and has to be closed manually. This has no effect on Odette '95 MC functions. The error message from the ComSecure program is self-explanatory. For more details refer to the ComSecure manual.

After transmission, the transferred file will be located in the backup directory. It is still encrypted. An unencrypted copy of the file can be found in the same directory with the file extension ".ori".

7 Appendix A: ENGPART (VDA Recommendation 4951) Mandatory Fields

“Mandatory Fields” of VDA recommendation 4951 as follows:

Input page	Input field	VDA identifier
Address	Company (short reference) Company Street City	3.1.1 3.2.1 3.2.3 3.2.5
Contact Person	Contact Person ¹ Function ^{2/3} Department Phone No. Fax No.	3.3.x.1 3.3.x.2 3.3.x.3 3.3.x.4 3.3.x.5
Generating Systems	Generating System ^{1/3}	5.2.x.1
File Formats	File Format ^{1/ 3} FF Version Generating OS Data Code	5.1.x.1 5.1.x.2 5.1.x.4 5.1.x.8
Departments	Name Final Recipient ¹ Phone No. Fax No. Ref. to File Formats	6.x.2.y 6.x.3.y 6.x.4.y 6.x.8.y.z
System Availability	(changes not necessary, first period is set to 0 - 24 h by default)	4.5.1.9 (1-3)

Notes:

- 1) At least one entry is necessary. With specialized departments: There has to be at least one department (department names may be omitted) and in each department at least one final recipient.
- 2) At least one contact person must have the function “partner data” here.
- 3) After clicking with the right mouse button in one of these input fields you may likewise choose one of a list of recommended terms. Their use is not mandatory (except from the restriction under 2)) and is left to you.

When you move the mouse pointer over an input field, the official VDA identifier for the current field is shown. Mandatory fields are also marked by the letter “M”.

8 Appendix B: Translation ENGPART -> ENGDAT

8.1 Receiver (RDE)

Note: If available use No. 3.4.xxx instead of 3.2.xxx

Plain text	No. ENGPART	No. ENGDAT
Receiver, coded	3.1.1.	3039
Receiver	3.2.1.	3036
Address	3.2.2. through 3.2.8.	3124
Customer / Vendor No.	3.1.2.	3296
Country coded	3.2.10.	3207
Contact Person	6.x.1. (3.5.x.1)	3412
Department	6.x.2.x. (3.5.x.3)	3412
Phone	6.x.3.x. (3.5.x.4.)	3928, 3929
Fax	6.x.4.x. (3.5.x.5.)	3926
Email	(3.5.x.6.a)	3896
Odette-ID	4.3.x.7.	UNB 0010
Odette-SFID	4.3.x.8.	UNB 0010
Address Code	6.x.6.x	UNB 0014
The Address Code is indispensable for a correct forwarding !!!		

8.2 Files (EFC)

Plain text	No. ENGPART	No. ENGDAT
File Name		1896
File Format, coded	5.1.x.3	6913
File Format	5.1.x.1	6912
Format Version	5.1.x.2	9906
Code Page, coded	5.1.x.9	1939
Code Page	5.1.x.8	1938
Generating System	5.2.x.1	4882
Generating System's Version	5.2.x.2	4880
Compression	5.3.1	4891

9 Appendix C: Remote Control of Odette '95 MC

9.1 Remote Control with Files

Once the feature is enabled (File-Options-Autostart with file) the start of a sending job can be remote control by a file called “~start.job” or “~delay.job”. The file “~delay.job” must contain a delay time in minutes (e.g. „60“) or a time value in the format HH:MM (e.g. „15:30“). Incorrect values will lead to a default delay of 1 hour. The file has to be created in the out directory of the relevant partner either manually or by scripting. It will be renamed to “~accept.job” as soon as the new job has been recognised by the job spooler. After a successfully completed transmission the file is renamed to “~done.job”.

Jobs listed in the job queue can be cancelled with a file called “~cancel.job”. The file “~accept.job” is renamed to “~canceled.job”.

Note: The file is used only for remote control purposes and will never be transmitted.

If the option “**Limited Dials**” is activated, the sending job will be cancelled after reaching the preset limit. The file “~accept.job” will be renamed to “~abort.job”.

The option “**Enhanced Protocol (multiple files)**” can be activated to create a status file in the outgoing directory.

Operation Mode:

1. The protocol files will be stored in a subdirectory called “log” in the directory for outgoing files. The subdirectory will be created automatically by Odette '95 MC and can be deleted afterwards by the controlling job.
2. To prevent access collisions, an empty file called “~locked” will be created in the subdirectory “log”. Other programs must finish access to this directory within 3 sec. Test for “~locked”, before accessing any files in this subdirectory.
3. The protocol file consist always of four lines:

1. line	Status
2. line	Date, Partner as per address database
3. line	Name of file in Odette, Name of file in Windows, file attributes
4. line	Last error (can be empty)

4. Possible status messages:

WAIT	Last connection attempt failed; reason see line 4. Another attempt will be started after three minutes, see line 2 for time of last trial. The most common reasons for this status are: all lines occupied, busy, partner does not respond...
SENT	The file was transferred, but End-To-End-Response is missing. Some systems will send this response by a separate call. The file will be moved into the subdirectory „backup“ when an End-To-End-Response has been submitted. The file will be transmitted again in the next connection if no response has been received.
EERP	(End-To-End-Response) The file is successful transmitted. The opposite has

	sent an End-To-End-Response.
ERROR	A connection was successfully established but the transfer of this file failed. See line 4. No further connection attempt follows.
RESTART	(Option "Restart" must be activated) During transmission of file an error occurred (system crash, connection interrupt). No further connection attempt follows. The transfer will be continued at the position of interruption when next connection has been established.

5. The protocol file can be deleted by controlling software after evaluation. If several files with equal recipient are transferred, Odette '95 MC will overwrite the protocol file.
6. The enhanced protocols can also be used without the auto-start function.
7. The file "~start.job" will only be tested if system is ready to receive. Protocol files will be created with the first connection attempt. There always exists a period of time between generating of file "~start.job" and the first connection attempt in which no protocols exist.

The option "**Enhanced protocol (single file)**" provides a simplified form of the above mentioned protocol.

Note:

Only one file "protokoll.txt" will be created in the program directory.

Entry Format:

1. line	Status, Date, Time (Additionally "RECEIVED" is another possible status. This means that one or more files have been received without error but Odette '95 MC was not able to send an end-to-end-response.)
2. line	Partner name
3. line	Number of sent files; number of received EERPs
4. line	number of received files; number of sent EERPs
5. line	Last error (may be empty)
6. line	Separator Line

9.2 Remote Control of Engpart

This function is available if the switch "Autostart with file" in the options window of Odette '95 MC is activated.

Select option „Export External Control“ in the Partner Data Administration window.

An export file (simple structured text file) will be created that can be used by other programs for verification.



Format of this file:

[CAD]	
CAD-System 1 CAD-System 2 ...	Companies present CAD-systems
[FORMAT]	
Format 1 Format 2 ...	A list of all formats which will be handled
[SENDER]	
Dept. 1 :Employee 1 :Employee 2 : ... Dept. 2 : Employee 11 : Employee 12 : ... Dept. 3 ...	All special departments and its employees, who receive and transmit files First name of department, second, in a new line, colon and the name of employee in this department. Additional departments can follow at any time without leading colon
[RECEIVER]	
Dept. 1 :Employee 1 ...	According to partner company
[END]	End of File

Transmission of files

Firstly copy all files to be transmitted into the directory for outgoing files. Additionally create a file called “~Engpart.job” within this directory that contains following information:

1. Line	Dept.Sender:Employee	Name of Dept. and employee, who send files. The style must be equal to Engpart
2. Line	Dept.Receiver:Employee	Dept. and name of employee in partner company, who receive the files
3. Line	CAD-System	Name of CAD-System, which created the files
4. Line	Format	Name of formats, in which the data are stored

Odette '95 MC will change the name of the file “~Engpart.job” into “~Accept.job” if a sending job will be generated. If no sending job will be created it will be renamed to “~Denied.job”. This also will happen if no files are in the directory.

9.3 Remote Monitoring

With activating the option “Status Ping” two files will be generated which can be used to monitor Odette '95 MC. The file “ping.txt” contains of following information:

1. Ready – The system is offline and ready to receive
2. *** Not Ready – The system is offline and not ready to receive. This indicates a possible error in ISDN or CAPI-interface.
3. *** Error – The communication thread is terminated. Further file transmissions are impossible.
4. *Number* – Odette '95 MC is online. The time in seconds in which no data is transmitted will be shown. A connection attempt can last several seconds until it succeeds or an ISDN error message appears. These error messages have no influence to the functionality of Odette '95 MC. For external monitoring of data transfer and connection attempts other remote control functions of Odette '95 MC are available.

The file “status.txt” holds the contents of the main window:

1. “OFFLINE” or “ONLINE nn sec.”
2. last ISDN-number
3. partner
4. filename
5. transmitted / received number of bytes
6. last error message or empty

9.4 Interface SWAN – Odette '95 MC

SWAN is a product from the company SSC-Services GmbH (www.ssc-services.de) and is a data management system used to automate data interchange processes. With the provided interface, Odette '95 MC can be remote controlled by the Swan application.

Both applications interact by calling subprograms that have to be located in the search path of Windows.

The installation of Odette '95 MC includes two programs called "SwanEV" and "SwanCancel" which are used to create and delete sending jobs. Odette '95 MC transmits its status messages to SWAN by running the program "start_dfu_status" which is part of the SWAN installation.

9.4.1 SWAN – Odette '95 MC Connectivity

Syntax:

```
swanev <Receiver> <Filename> <Virtual Filename> <Job Number>  
swancancel <Receiver> <Filename> <Virtual Filename> <Job Number>
```

Parameters:

Receiver:	File receiver; this field must correspond exactly with the entry "Description" of the Odette '95 MC address database.
Filename:	Complete filename, including path, local or network.
Virtual Filename:	Name of file in Odette '95 MC (upper case, max. 26 characters)
Job Number:	Number automatically given by SWAN

Note:

The program "SwanEV" will copy the file into the directory for outgoing files. It does not require write access rights for the original file. By calling "SwanCancel" the copy process will be deleted. Odette '95 MC will transmit the files with adjustable delay. All files with the same job number will be collected during this delay and will be sent in a single transaction.

Examples:

```
SwanEV "Bartsch Software" x:\SwanFolder\Test.dat ENG000830103014BAR04001005  
99114ab
```

```
SwanCancel "Bartsch Software" x:\SwanFoldeer\Test.dat ENG000830103014BAR04001005  
99114ab
```

9.4.2 SWAN – Odette '95 MC Messaging

Syntax:

```
start_dfu_status <Status>
```

Parameter:

Syntax of Status:

```
auftragsnr; <job number> # firma; <receiver> # file; <filename> # odettefile; <virtual filename> # fehler; <error message> # zeit; <JJ:MM:TT hh:mm> # status; <status message> [further information] }
```

Status message	Odette	Used Parameters
Beginn Senden	SFPA remote	auftragsnr, firma, file, odettefile, fehler, zeit
Beginn Empfangen	SFPA local	firma, file, odettefile, fehler, zeit
Ende Senden	EFPA remote	auftragsnr, firma, file, odettefile, fehler, zeit
Ende Empfangen	EFPA local	firma, file, odettefile, fehler, zeit
Wiederholung	SFNA Y, EFNA	(auftragsnr), firma, file, odettefile, fehler, zeit
Abbruch	SFNA N	(auftragsnr), firma, file, odettefile, fehler, zeit
Abbruch Verbindung	Connection failed	(auftragsnr), firma, fehler, zeit
Abbruch Sitzung	ESID with error	(auftragsnr), firma, fehler, zeit
Lokaler Fehler	Error in OFTP-System	(auftragsnr), firma, fehler, zeit
Ausgehender Ruf	Connection attempt	auftragsnr, firma, file, odettefile, fehler, zeit
Eingehender Ruf	Incoming call	fehler, zeit, nummer
Beginn Sitzung	SSID remote	(auftragsnr), firma, fehler, zeit
Ende Sitzung	ESID 0	(auftragsnr), firma, fehler, zeit
EERP empfangen	EERP remote	(auftragsnr), firma, file, odettefile, fehler, zeit
Ende Verbindung	End of connection	(auftragsnr), (firma), fehler, zeit

Examples:

```
auftragsnr; 99114ab # firma; Bartsch Software # file; Test.dat # odettefile;
ENG000830103014BAR04001005 # fehler; Keine # zeit; 00:08:30 10:30 # status;
Beginn Senden }
```

```
auftragsnr; # firma; Bartsch Software # file; c:\OdetteIn\Bartsch\Test.dat #
odettefile; Test.dat.5818 # fehler; Keine # zeit; 00:08:30 10:48 # status;
Beginn Empfangen }
```

```
auftragsnr; 99114ab # firma; Bartsch Software # file; Test.dat # odettefile;
ENG000830103014BAR04001005 # fehler; Keine # zeit; 00:08:30 10:35 # status; Ende
Senden }
```

```
auftragsnr; # firma; Bartsch Software # file; c:\EingangOdette\Bartsch\Test.dat
# odettefile; Test.dat.5818 # fehler; Keine # zeit; 00:08:30 10:48 # status;
Ende Empfangen }
```

```
auftragsnr; 99114ab # firma; Bartsch Software # file; Test.dat # odettefile;
ENG000830103014BAR04001005 # fehler; Invalid filename # zeit; 00:08:30 10:35 #
status; Wiederholung }

auftragsnr; 99114ab # firma; Bartsch Software # file; # odettefile; # fehler;
Called party is busy # zeit; 00:08:30 09:11 # status; Abbruch Verbindung }

auftragsnr; 99114ab # firma; Bartsch Software # file; # odettefile; # fehler;
Invalid Partner-ID SFID # zeit; 00:08:30 09:11 # status; Abbruch Sitzung }

auftragsnr; 99114ab # firma; Bartsch Software # file; # odettefile; # fehler;
File "Test.dat" not found # zeit; 00:08:30 09:14 # status; Lokaler Fehler }

auftragsnr; # firma; Bartsch Software # file; # odettefile; # fehler; Keine #
zeit; 00:08:30 09:11 # status; Ausgehender Ruf }

auftragsnr; # firma; # file; # odettefile; # fehler; Keine # zeit; 00:08:30
09:11 # status; Eingehender Ruf # nummer; 4317209328 }

auftragsnr; # firma; Bartsch Software # file; # odettefile; # fehler; Keine #
zeit; 00:08:30 10:40 # status; Beginn Sitzung }

auftragsnr; # firma; Bartsch Software # file; # odettefile; # fehler; Keine #
zeit; 00:08:30 10:30 # status; Ende Sitzung }

auftragsnr; # firma; Bartsch Software # file; # odettefile;
ENG000830103014BAR04001005 # fehler; Keine # zeit; 00:08:30 10:40 # status; EERP
empfangen }
```

Note:

1. Names of received files, which do not correspond with the EngDat-Standard, will be extended with a dot and a serially numbered. The name will be shortened to 26 characters; the local filename remains the same.
2. During the receiving process, the parameter "file" contains always the complete path. Because the files will be copied prior sending, all related status messages will omit the path of the files.
3. The parameter of start_dfu_status will not be enclosed in "".